

The accretion regime of LS 5039: 3-D SPH simulations

A.T. Okazaki^{*},^a G.E. Romero,^b and S.P. Owocki^c

^a Faculty of Engineering, Hokkai-Gakuen University, Toyohira-ku, Sapporo 062-8605, Japan

^b Facultad de Ciencias Astronómicas y Geofísicas, Universidad Nacional de La Plata, Paseo del Bosque, 1900 La Plata, Argentina

^c Bartol Research Institute, University of Delaware, Newark, DE 19716, USA

E-mail: okazaki@elsa.hokkai-s-u.ac.jp, romero@fcaglp.unlp.edu.ar,
owocki@bartol.udel.edu

LS 5039 is a TeV gamma-ray binary with extended radio emission. It consists of a compact object in the mildly eccentric ($e=0.35$), 3.9-day orbit around a massive O star. The nature of the compact object is not yet established. In this paper, assuming that the compact object is a black hole, we study the accretion of O-star wind by the black hole, by performing three-dimensional Smoothed Particle Hydrodynamics (SPH) simulations. In order to roughly emulate the effect of the stellar radiation effectively canceling the stellar gravity, we assume that the O star's gravity does not exert on the wind. The wind particles are ejected with half the observed terminal velocity in a narrow range of azimuthal and vertical angles toward the black hole, in order to emulate the wind significantly slower than the terminal speed, and optimize the resolution and computational efficiency of simulations. We find that the mass-accretion rate closely follows the classical Bondi-Hoyle-Littleton accretion rate, which is of the order of 10^{16} g s^{-1} around periastron. The accretion rate at this level would provide jets enough power to produce the gamma-rays detected by HESS. Since the accretion peak occurs near the periastron passage, we need a strong gamma-ray absorption around periastron in order for the microquasar scenario to be consistent with the observed orbital modulation of the TeV gamma-ray flux.

*7th INTEGRAL Workshop
September 8-11 2008
Copenhagen, Denmark*

^{*}Speaker.

1. Introduction

The high mass X-ray binary LS 5039 consists of an O6.5V star and a compact object in the ~ 3.9 -day orbit with a moderate eccentricity ($e \sim 0.35$). It is one of the three binaries from which persistent TeV γ -rays have been detected [1]. The VHE γ -ray luminosity from LS 5039 modulates between $4 - 10 \times 10^{33} \text{ erg s}^{-1}$ [1]. The maximum flux takes place around phase 0.8-0.9 [1, 5, 7], where phase 0 corresponds to the periastron passage. The system shows a persistent radio emission, the morphology of which is consistent with mildly relativistic jets [14, 15]. The nature of the compact object has not been established. [7] proposed that it is a black hole, which would place LS 5039 in the microquasar class, whereas some argue that the system is a colliding-wind binary with a non-accreting pulsar (e.g., [8, 11, 17]). To test the microquasar scenario for LS 5039, it is important to study whether the black hole can get high enough mass-accretion rate to power jets to produce the γ -rays detected by HESS. In this paper, we briefly report on the result from three dimensional, numerical simulations of wind accretion by a black hole in LS 5039.

2. Numerical model

Simulations are performed with a 3-D Smoothed Particle Hydrodynamics (SPH) code. The code is based on a version originally developed by Benz [3, 4], then by Bate and his collaborators [2], and recently by [13] and [16]. It uses the variable smoothing length and the SPH equations with the standard cubic-spline kernel are integrated with individual time step for each particle. The artificial viscosity is assumed to have the standard values of $\alpha_{\text{SPH}} = 1$ and $\beta_{\text{SPH}} = 2$. In our code, the O-star wind is modeled by an ensemble of isothermal gas particles of negligible mass, while the compact object, which we assume to be a black hole, by a sink particle with the corresponding mass and a radius r_{acc} taken to be much smaller than the classical Bondi-Hoyle-Littleton (BHL) accretion radius, r_{BHL} , at periastron. If gas particles fall within this radius, they are removed from the simulation. On the other hand, we model the O star as a particle with the corresponding mass, whose gravity exerts only on the binary companion, not on the wind particles. We take this assumption to roughly emulate the effect of the stellar radiation effectively canceling the stellar gravity. Hence, in our simulation, the gravity by the compact object is the only external force exerting on the wind particles. The wind particles have the initial velocity of half the observed terminal velocity, given that the accretion onto the black hole occurs in the region where the wind speed is still significantly slower than the terminal velocity. We set the binary orbit in the x - y plane and the major axis of the orbit along the x -axis, where the apastron is in the $+x$ -direction. The stellar, wind, and orbital parameters adopted for LS 5039 simulations are summarized in Table 1.

To optimize the resolution and computational efficiency of our simulations, the wind particles are ejected only in a narrow range of azimuthal and vertical angles toward the black hole ¹. We have confirmed that this method provides a quite similar flow structure to that of a corresponding

¹In the poster presented at the Workshop, we had broken the stellar wind and accretion portions of the computation into two separate, but linked parts, in which the first focused on the stellar wind expansion and the rate of mass that enters a spherical region around the black hole, and the second focused the mass accretion onto the black hole, using the information of the first part of the simulation. However, after the Workshop, it turned out that the second part had a bug that seriously affected the final result. Therefore, we have revised our code and this time rerun simulations of the whole system, using a much smaller accretion radius. The result reported in this paper is based on these revised simulations.

Table 1: Model parameters for LS 5039

	Primary	Secondary
Spectral type	O6.5V	Black Hole
Mass (M_{\odot})	22.9 ^a	3.7 ^a
Radius	$9.3R_{\odot}$ ^a ($= 0.31a$)	$2.5 \times 10^{-3}a$
Effective temperature T_{eff} (K)	39,000 ^a	–
Initial wind velocity $V_{w,\text{ini}}$ (km s^{-1})	1,200	–
Mass loss rate \dot{M}_{*} ($M_{\odot} \text{ yr}^{-1}$)	5×10^{-7} ^b	–
Orbital period P_{orb} (d)		3.9060 ^a
Orbital eccentricity e		0.35 ^a
Semi-major axis a (cm)		2.17×10^{12}

^a [7]^b The upper limit of the low X-ray state and the lower limit of the high state [7].

spherically symmetric wind. Moreover, the former has a much higher spatial resolution than the latter, as expected. We can see this in Fig. 1 comparing the density distribution in the orbital plane at periastron from such a simulation with that from a simulation of an axisymmetric wind ejected within a constant opening angle of 20° . Both simulations use similar number of wind particles N_{SPH} . In the former simulation, the accretion radius of the black hole $r_{\text{acc}} = 2.5 \times 10^{-3}$, while $r_{\text{acc}} = 10^{-2}$ for the latter simulation because of the lower spatial resolution.

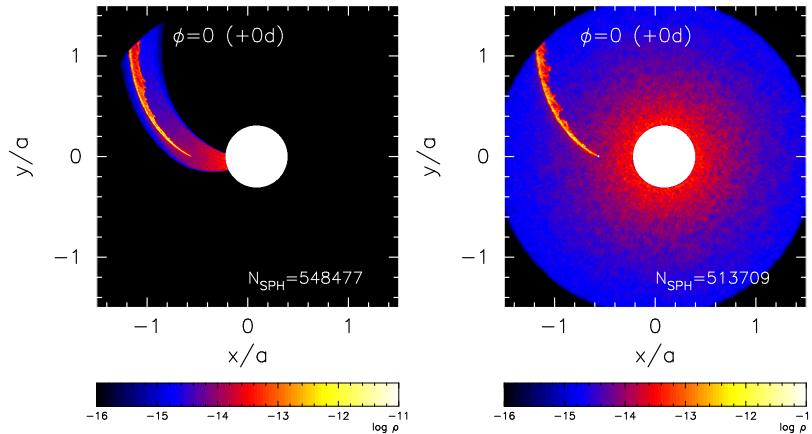


Figure 1: Wind density in the orbital plane at periastron. The left panel shows the logarithmic density from a simulation where wind particles are ejected toward the black hole (a small bright dot on the left of the O star) in the restricted range of 30° in the azimuthal direction and 20° in the polar direction, whereas the right panel shows that from a simulation of an axisymmetric wind with the same opening angle of 20° . Annotated in each panel are the phase, the time from the periastron passage, and the number of wind particles. $r_{\text{acc}} = 2.5 \times 10^{-3}$ in the left panel, while $r_{\text{acc}} = 10^{-2}$ in the right panel because of the lower spatial resolution.

3. Results

In Figs. 2 and 3, we present the density distribution of the wind in the binary orbital plane at

several different phases ($\phi = 0$ corresponds to periastron). Figure 2 covers the whole simulation volume (within $1.5a$ from the center of mass of the binary), while Fig. 3 shows the detailed structure of the wind around the black hole. In both figures, the color-scale plots show the logarithmic density of the wind in the orbital plane, while arrows superposed on the density plot in Fig. 3 denote the velocity vectors of the flow. In Fig. 3, the dashed circle denotes the classical BHL accretion radius, r_{BHL} , for a supersonic flow, which is given by

$$r_{\text{BHL}} = \frac{2GM_X}{v_{\text{rel}}^2}, \quad (3.1)$$

where M_X is the mass of the black hole and v_{rel} is the relative velocity between the wind and the black hole (e.g., [9]). Here we have calculated r_{BHL} by taking $v_{w,\text{ini}} = 1,200 \text{ km s}^{-1}$ as the wind velocity. The line fragment on the dashed circle in Fig. 3 shows the direction of the O star.

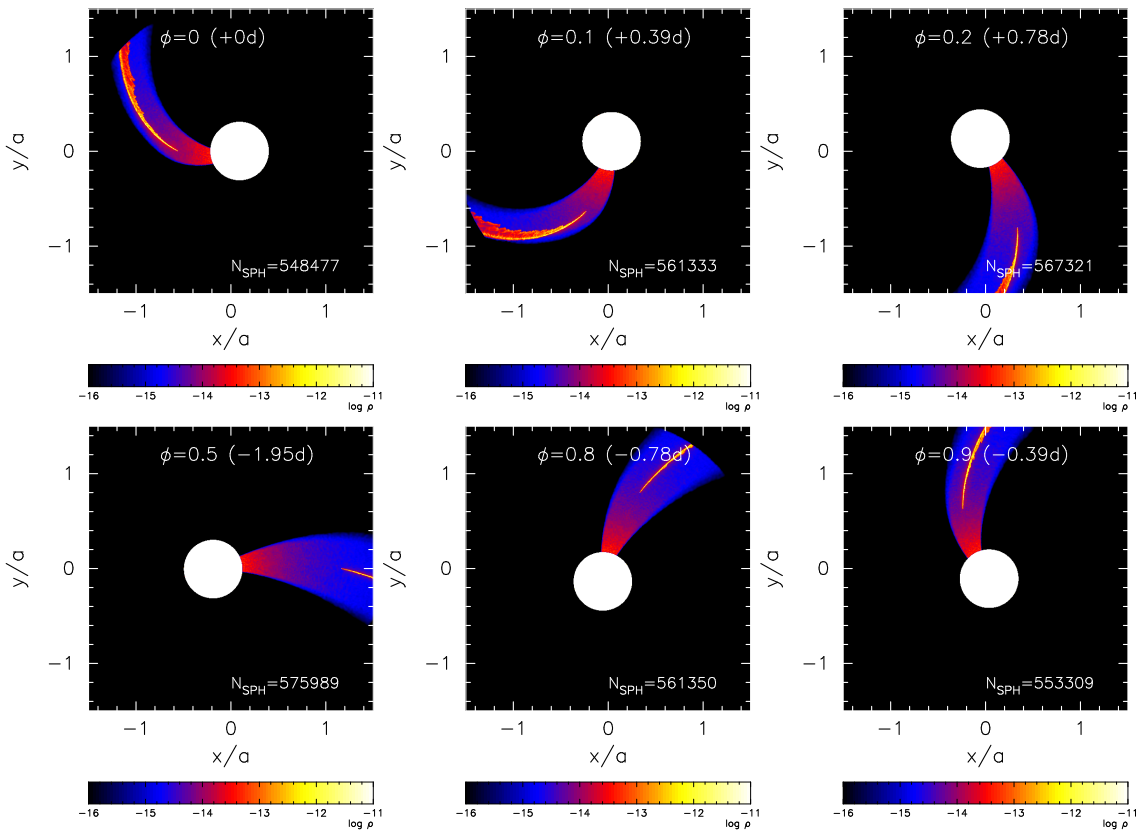


Figure 2: Snapshots at six different phases. The color-scale plot shows the logarithmic density in the orbital plane in cgs units. The large filled circle near the center is the O star, while a tiny bright dot (with the radius of $2.5 \times 10^{-3}a$) at the tip of bow shocks is the black hole.

Figure 2 shows that strong bow shocks form behind the black hole and that its shape is distorted around periastron by the rapid orbital motion of the black hole. Note that, despite the spiral shape of the wind region, which is a direct consequence of our wind ejection method, the flow is radial except in a region near bow shocks.

From Fig. 3, we can see that the accretion is basically of classical BHL type. The wind passing through a region within $\sim r_{\text{BHL}}$ from the black hole is strongly focussed and ultimately accreted,

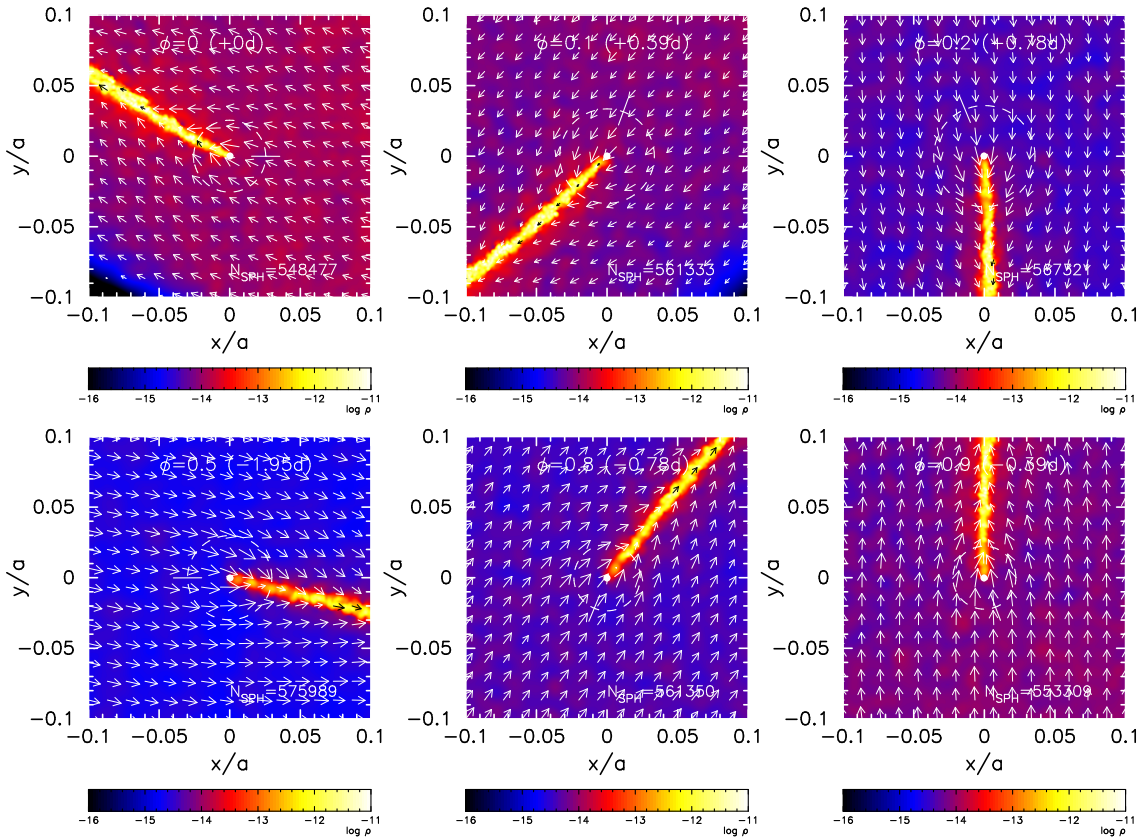


Figure 3: Detailed flow structure around the black hole at the same phases as in Fig. 2. Color-scale plot shows the logarithmic density in the orbital plane, while arrows denote the velocity vectors of the flow. The dashed circle around the black hole denotes the Bondi-Hoyle-Littleton accretion radius, r_{BHL} , for a $1,200\text{km s}^{-1}$ wind. The line fragment on the dashed circle shows the direction of the O star.

while the flow is almost parallel in an outer region. In order to see this more clearly, we compare in Fig. 4 the simulated mass-accretion rate, \dot{M} , with the BHL accretion rate, \dot{M}_{BHL} , given by

$$\dot{M}_{\text{BHL}} = \frac{G^2 M_X^2 \dot{M}_*}{v_{\text{rel}}^4 d^2}, \quad (3.2)$$

where d is the binary separation (e.g., [9]). Here we have calculated v_{rel} , assuming the constant wind velocity of $v_{\text{w,ini}}$. In this figure, we have averaged the rapidly fluctuating accretion rate over the phase interval of 0.01 (histogram in blue). The red line denotes the BHL accretion rate, \dot{M}_{BHL} . It is immediately observed that the simulated accretion rate closely follows the BHL rate. Thus, the classical BHL approximation also basically hold in 3-D simulations as it does in 2-D counterparts. A closer look at the figure, however, tells us that the simulated accretion rate is slightly lower than the BHL rate. This is due to the effect of wind acceleration by the gravity of black hole; the assumption of constant wind velocity results in an slightly underestimated relative velocity, which in turn leads to a slightly overestimated BHL accretion rate shown in Fig. 4. The simulated accretion rate modulates by a factor of ~ 5 . It varies from $\sim 10^{16}\text{g s}^{-1}$ around periastron to $\sim 2 \times 10^{15}\text{g s}^{-1}$ around apastron.

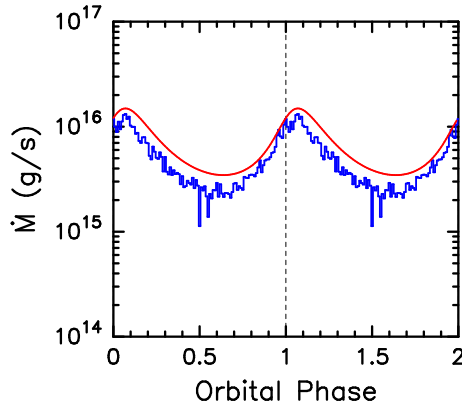


Figure 4: Mass-accretion rate onto the black hole, which is averaged over the phase interval of 0.01. For comparison, the BHL accretion rate for a wind of $1,200 \text{ km s}^{-1}$ is shown by the red line.

It is important to note that the mass-accretion rate of $\sim 10^{16} \text{ g s}^{-1}$ would provide jets enough power to produce the γ -rays detected by HESS. With $\dot{M} \sim 10^{16} \text{ g s}^{-1}$, the accretion power is $\sim 10^{37} \text{ erg s}^{-1}$. Assuming that 10% of this power goes to jets and $\sim 1/3$ of the jet power is converted to relativistic particles, then we expect a γ -ray luminosity of roughly $\sim 3 \times 10^{35} \text{ erg s}^{-1}$, which would explain the observed γ -ray luminosity of $2.7 \times 10^{35} \text{ erg s}^{-1}$ above 100 MeV [10].

Now, with the accretion rate as high as $\sim 10^{16} \text{ g s}^{-1}$, why do we see no thermal feature at X-rays (e.g., [6])? One possibility is that the accretion flow in LS 5039 is radiatively inefficient. For a black hole of $3.7 M_{\odot}$, the Eddington luminosity is $\sim 4.6 \times 10^{38} \text{ erg s}^{-1}$. With the energy conversion rate ~ 0.1 , the critical mass accretion rate, \dot{M}_{crit} is $\sim 5 \times 10^{18} \text{ g s}^{-1}$. Then, the accretion rate of $\sim 10^{16} \text{ g s}^{-1}$ corresponds to $\sim 2 \times 10^{-3} \dot{M}_{\text{crit}}$. This rate is well below the maximum accretion rate, $0.05 - 0.1 \dot{M}_{\text{crit}}$, below which the advection-dominated accretion solutions exist [12]. Thus, our model is consistent with ADAF solutions, which could explain the paucity of thermal X-ray emission in LS 5039.

4. Conclusions

We have carried out 3-D SPH simulations of the wind accretion in LS 5039, assuming that the compact object is a $3.7 M_{\odot}$ black hole. Wind particles were ejected at half the observed terminal velocity to emulate the stellar wind significantly lower than the terminal velocity. In order to optimize the resolution and computational efficiency of simulations, we have simulated a wind restricted to a narrow range of angles toward the black hole. We have found that the simulated accretion rate closely follows, but is slightly lower than, the classical Bondi-Hoyle-Littleton accretion rate. The maximum accretion rate of $\sim 10^{16} \text{ g s}^{-1}$ for the stellar mass-loss rate of $5 \times 10^{-7} M_{\odot} \text{ yr}^{-1}$ takes place at a phase slightly after the periastron passage. This rate would provide jets in LS 5039 enough power to produce the γ -rays detected by EGRET and HESS. Since the accretion peak occurs near periastron, we need a strong γ -ray absorption around periastron in order for the microquasar scenario to be consistent with the observed peak phase of 0.8-0.9 of the TeV γ -ray flux.

References

- [1] Aharonian F., et al. (HESS Collaboration), *3.9 day orbital modulation in the TeV gamma-ray flux and spectrum from the X-ray binary LS 5039*, A&A **460**, 743 (2006)
- [2] Bate M.R., Bonnell I.A. & Price N.M., *Modelling accretion in protobinary systems*, MNRAS **277**, 362 (1995)
- [3] Benz W., in Buchler J. R., ed., *The Numerical Modelling of Nonlinear Stellar Pulsations*. Kluwer, Dordrecht, p.269 (1990)
- [4] Benz W., Bowers R.L., Cameron A.G.W. & Press W.H., *Dynamic mass exchange in doubly degenerate binaries. I - 0.9 and 1.2 solar mass stars*, ApJ **348**, 647 (1990)
- [5] Bosch-Ramon V., Paredes J.M., Ribó M., Miller J.M., Reig P., Martí J., *Orbital X-Ray Variability of the Microquasar LS 5039*, ApJ **628**, 388 (2005)
- [6] Bosch-Ramon V., Motch C., Ribó M., Lopes de Oliveira R., Janot-Pacheco E., Negueruela I., Paredes J. M., Martocchia A., *Exploring the connection between the stellar wind and the non-thermal emission in LS 5039*, A&A **473**, 545 (2007)
- [7] Casares J., Ribó M., Ribas I., Paredes J. M., Martí J., Herrero, A., *A possible black hole in the γ -ray microquasar LS 5039*, MNRAS **364**, 899 (2005)
- [8] Dubus G., *Gamma-ray binaries: pulsars in disguise?*, A&A **456**, 801 (2006)
- [9] Frank J., King A.R., & Raine D.J., *Accretion power in Astrophysics, 3rd edn*. Cambridge Univ. Press, Cambridge, pp.74, 75 (2002)
- [10] Hartman R.C., Bertsch, D.L., Bloom, S.D., et al., *The Third EGRET Catalog of High-Energy Gamma-Ray Sources*, ApJS **123**, 79 (1999)
- [11] Martocchia A., Motch C., & Negueruela I., *The low X-ray state of LS 5039/RX J1826.2-14502005*, A&A, **430**, 245 (2005)
- [12] Narayan R., Mahadevan R., & Quataert E., in: M.A. Abramowicz, G. Björnsson, & J.E. Pringle (eds), *Theory of Black Hole Accretion Disks*, Cambridge University Press, Cambridge, p.148 (1998)
- [13] Okazaki A.T., Owocki S.P., Russell C.M.P. & Corcoran M.F., *Modelling the RXTE light curve of η Carinae from a 3D SPH simulation of its binary wind collision*, MNRAS Letters **388**, L39 (2008)
- [14] Paredes, J.M., Martí, J., Ribó, M., & Massi, M., *Discovery of a High-Energy Gamma-Ray-Emitting Persistent Microquasar*, Science **288**, 2340 (2000)
- [15] Paredes, J.M., Ribó, M., Ros, E., Martí, J., & Massi, M., *Confirmation of persistent radio jets in the microquasar LS 5039*, A&A **393**, L99 (2002)
- [16] Romero G.E., Okazaki A.T., Orellana M., & Owocki S.P., *Accretion vs. colliding wind models for the gamma-ray binary LS I +61 303: an assessment*, A&A **474**, 15 (2007)
- [17] Sierpowska-Bartosik A. & Torres D.F., *Pulsar Model of the High-Energy Phenomenology of LS 5039*, ApJ Letters **671**, 145 (2007)