

## QCD Analysis of the Polarized World Data

---

**Johannes Blümlein**<sup>\*†</sup>

*Deutsches Elektronen-Synchrotron, DESY, Platanenallee 6, D-15738 Zeuthen, Germany*

*E-mail: Johannes.Bluemlein@desy.de*

**Helmut Böttcher**

*Deutsches Elektronen-Synchrotron, DESY, Platanenallee 6, D-15738 Zeuthen, Germany*

*E-mail: Helmut.Boettcher@desy.de*

The results of a recent next-to-leading order QCD analysis of the world data on polarized deep inelastic scattering are reported. New parameterizations are derived for the quark and gluon distributions and the value of  $\alpha_s(M_Z^2)$  is determined. We obtain  $\alpha_s^{\text{NLO}}(M_Z^2) = 0.1132^{+0.0056}_{-0.0095}$ . Potential higher twist contributions to the structure function  $g_1(x, Q^2)$  are considered.

*XVIII International Workshop on Deep-Inelastic Scattering and Related Subjects, DIS 2010*

*April 19-23, 2010*

*Firenze, Italy*

---

<sup>\*</sup>Speaker.

<sup>†</sup>This work was supported in part by DFG Sonderforschungsbereich Transregio 9, Computergestützte Theoretische Teilchenphysik and the European Commission MRTN HEPTOOLS under Contract No. MRTN-CT-2006-035505.

## 1. Introduction

The short distance behaviour of the partons inside strongly polarized nucleons constitutes one of the central research topics in QCD being explored both with perturbative and non-perturbative methods. During the last years the polarized deep-inelastic scattering data have further improved [1–15]. In this note we report on a new next-to-leading order (NLO) QCD analysis of these data [16], updating earlier investigations [17]. At large enough four-momentum transfer  $Q^2 = -q^2$ , the structure function  $g_1(x, Q^2)$  mainly receives twist-2 contributions<sup>1</sup> and is related to the polarized twist-2 parton distribution functions (PDFs). We analyze the structure function  $g_1(x, Q^2)$ , which is derived from the longitudinal polarization asymmetry accounting for a data-based description of the denominator function [19] and corresponding parameterizations for the longitudinal structure function, cf. [16]. In the present analysis we include the  $O(\alpha_s)$  contribution due to charm quarks, [20, 21]<sup>2</sup>. The structure function  $g_2(x, Q^2)$  is described at leading twist by the Wandzura-Wilczek relation [21, 23]. The parameters of the polarized parton densities, which can be measured using the above data sets, are determined with correlated errors along with the QCD scale  $\Lambda_{\text{QCD}}^{N_f=4}$ . We also analyze potential contributions of higher twist. Finally, a phenomenological parameterization of the polarized NLO parton distribution functions is provided in terms of grids for the central values and correlated errors, [24].

## 2. The Analysis

The NLO QCD analysis of the structure function  $g_1(x, Q^2)$  is performed in Mellin space following the standard formalism, cf. e.g. [25], including the heavy quark corrections [26].<sup>3</sup> In this representation the evolution equations can be solved analytically, in both a fast and numerically precise way. Only one numerical integral around the singularities of the solution in the complex plane, located on the real axis left to an upper bound, has to be performed to represent  $g_1(x, Q^2)$ . As the data are located at low values of  $Q^2$  target mass corrections are applied, cf. [18, 28]. For the deuteron targets a wave function correction is performed [29]. The parton distributions at the starting scale  $Q_0^2 = 4 \text{ GeV}^2$  are parameterized by

$$x\Delta f_i(x, Q_0^2) = \eta_i A_i x^{a_i} (1-x)^{b_i} (1+\gamma_i x), \quad (2.1)$$

with  $\eta_i$  the first moments. The present analysis parameterizes the sea quarks assuming approximate flavor  $SU(3)$  symmetry. The deep-inelastic data alone cannot resolve the flavor dependence of the sea. Taking into account semi-inclusive data [30], and later on polarized Drell-Yan and di-muon data, will allow the determination of polarized sea quark distributions, similar to the unpolarized case.<sup>4</sup>  $\eta_{u_v}$  and  $\eta_{d_v}$  are fixed due to the neutron and hyperon- $\beta$  decay parameters  $F$  and  $D$ , which are very well measured :

$$\eta_{u_v} - \eta_{d_v} = F + D \quad \text{and} \quad \eta_{u_v} + \eta_{d_v} = 3F + D, \quad (2.2)$$

<sup>1</sup>Twist-3 contributions are connected by target mass effects, cf. [18].

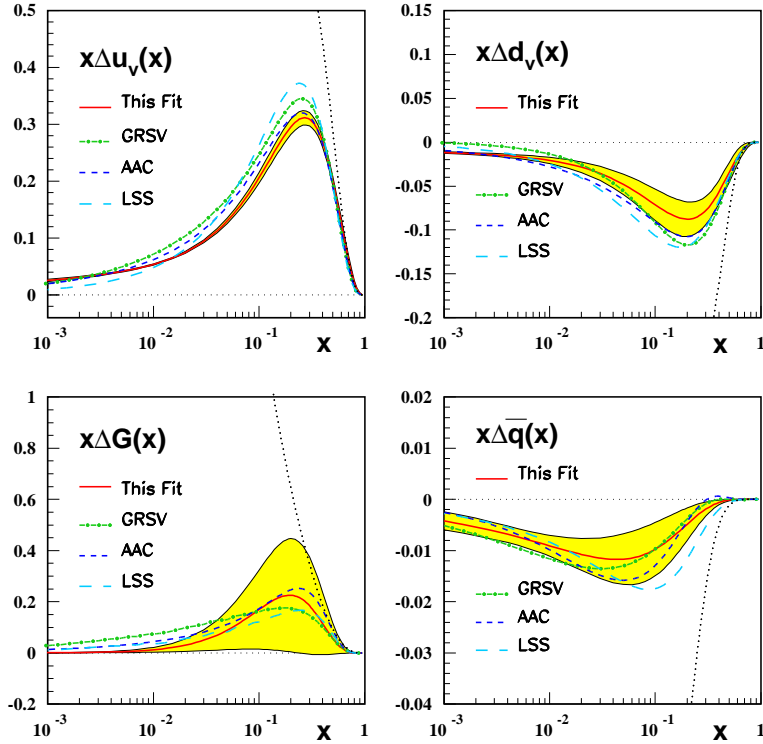
<sup>2</sup>The  $O(\alpha_s^2)$  heavy flavor corrections are only known in the asymptotic region  $Q^2 \gg m^2$ , [22].

<sup>3</sup>We refrain from carrying out small- $x$  resummations, since yet unknown subleading terms are very likely to cancel the leading order effects, cf. [27].

<sup>4</sup>For a first analysis accounting for the flavor dependence of the sea quarks see [31].

$$\eta_{u_v} = 0.928 \pm 0.014 \text{ and } \eta_{d_v} = -0.342 \pm 0.018 . \quad (2.3)$$

The parameters in (2.1) cannot all be measured using the present data since for some the  $\chi^2$ -fit yields errors larger than 100%. In case of the sea-quark and gluon density  $\gamma_i$  is found to be compatible with zero. Furthermore the  $a_i$ -parameters of the distributions  $\Delta q_s$  and  $\Delta G$  are related by about  $a_{\Delta G} = a_{\Delta q_s} + 1$ , which we use. The parameters  $\gamma_{u_v}$  and  $\gamma_{d_v}$  are fitted in an initial run and are then kept fixed as model parameters. For the large- $x$  parameters  $b_{\Delta q_s}$  and  $b_{\Delta G}$  we used the relation  $b_{\Delta q_s}/b_{\Delta G}(\text{pol}) = b_{\Delta q_s}/b_{\Delta G}(\text{unpol}) = 1.44$  and determine  $b_{\Delta G} = 5.61$  and  $b_{\Delta q_s} = 8.08$  in the fit. In the final fit 8 parameters are determined including  $\Lambda_{\text{QCD}}^{N_f=4}$ . In Figure 1 we show the four distributions  $\Delta u_v, \Delta d_v, \Delta q_s$  and  $\Delta G$  at the input scale and compare them to other determinations. In Ref. [16] we

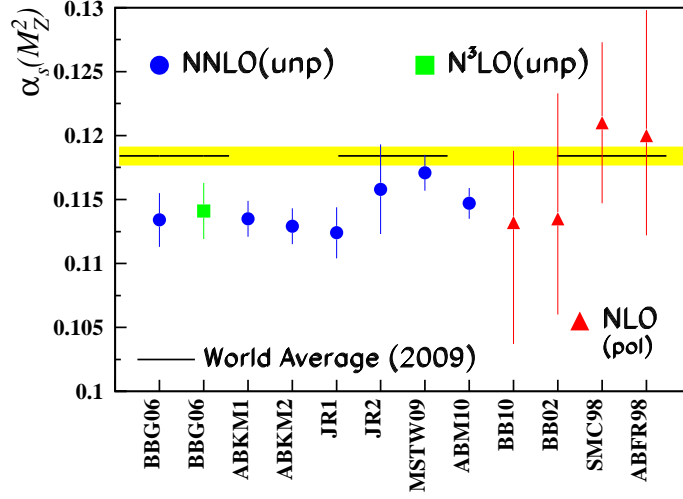


**Figure 1:** NLO polarized parton distributions at the input scale  $Q_0^2 = 4.0 \text{ GeV}^2$  (solid line) compared to results obtained by GRSV (dashed-dotted line) [32], AAC (dashed line) [33], and LSS (long dashed line) [34]. The shaded areas represent the fully correlated  $1\sigma$  error bands calculated by Gaussian error propagation. The dotted line indicates the positivity bound using the parameterization [35]; from Ref. [16].

provide the correlated errors. Due to this one may perform Gaussian error propagation for all observables based on polarized parton densities predicting the PDF errors of these quantities. There we also compute a series of moments for the different parton densities which can be compared to upcoming lattice simulations.

The nucleon spin is given by the relation

$$\frac{1}{2} = \frac{1}{2} \langle \Delta \Sigma(x) \rangle_0 + \langle \Delta G(x) \rangle_0 + L_q + L_g \quad (2.4)$$



**Figure 2:** A summary of the current measurements of  $\alpha_s(M_Z^2)$  from unpolarized and polarized DIS data, cf. Ref. [16] for details. Due to the size of errors we include only the results of NNLO and N<sup>3</sup>LO analyses in the unpolarized case, while those in the polarized case stem from NLO analyses. The yellow band marks the world average of 2009 [36].

to the first moments of the polarized flavor singlet and gluon distributions and the quark and gluon angular momenta  $L_{q,g}$ . In the present analysis we obtain

$$\langle \Delta \Sigma(x) \rangle_0 = 0.216 \pm 0.079 \quad (2.5)$$

$$\langle \Delta G(x) \rangle_0 = 0.462 \pm 0.430, \quad (2.6)$$

which saturates the required value even for vanishing values for  $L_q$  and  $L_g$ . However, the error on the gluon density is still rather large.

In deep-inelastic QCD analyses it is important to determine the PDF-parameters at the initial scale  $Q_0^2$  together with the QCD scale  $\Lambda_{\text{QCD}}$  since there are strong correlations, e.g. between the gluon-normalization and  $\alpha_s(M_Z^2)$ , but also to other parameters. We obtain

$$\Lambda_{\text{QCD}}^{(4)} = 243 \pm 62 \text{ (exp)} \begin{matrix} -37 \\ +21 \end{matrix} \text{ (FS)} \begin{matrix} +46 \\ -87 \end{matrix} \text{ (RS)} \text{ MeV}. \quad (2.7)$$

The renormalization (RS) and factorization scales (FS) were varied by a factor of 2 around  $Q^2$ . Here we excluded values  $\mu_{f,r}^2 < 1 \text{ GeV}^2$ , unlike in Ref. [17], since at scales lower than  $1 \text{ GeV}^2$  the perturbative description cannot be considered reliable anymore. Correspondingly, one obtains

$$\alpha_s(M_Z^2) = 0.1132 \begin{matrix} +0.0043 \\ -0.0051 \end{matrix} \text{ (exp)} \begin{matrix} -0.0029 \\ +0.0015 \end{matrix} \text{ (FS)} \begin{matrix} +0.0032 \\ -0.0075 \end{matrix} \text{ (RS)}. \quad (2.8)$$

The errors are much larger than in the unpolarized case, at NNLO, where an accuracy of  $O(1\%)$  is reached. Still the central value is lower than the current world average and well comparable to the unpolarized values. In Figure 2 we summarize the current status of  $\alpha_s(M_Z^2)$  measurements in deep-inelastic scattering. We would like to mention the results of the unpolarized NS-analysis [37] at N<sup>3</sup>LO :

$$\alpha_s(M_Z^2) = 0.1141 \begin{matrix} +0.0020 \\ -0.0022 \end{matrix} \quad (2.9)$$

and recent combined NS and singlet NNLO analyses [38, 39]

$$\alpha_s(M_Z^2) = 0.1124 \pm 0.0020 \quad (2.10)$$

$$\alpha_s(M_Z^2) = 0.1135 \pm 0.0014 . \quad (2.11)$$

Very recently, due to the inclusion of the combined H1+ZEUS data the latter value receives a slight change to

$$\alpha_s(M_Z^2) = 0.1147 \pm 0.0012 , \quad (2.12)$$

reaching now the accuracy of 1 %, [40].

We also fitted additive higher twist terms to  $g_1(x, Q^2)$  to explore the corresponding structures in the region  $x \leq 0.6$  for the proton- and deuteron targets. While in case of the deuteron target the results is fully compatible with zero, an effect of up to  $2 \sigma$  is observed for four of five bins in case of the proton target. This result is indicative mainly. In the unpolarized case one has much better means to separate leading and higher twist effects, cf. [41, 42], in a clear manner. This also requires even higher order corrections. A comparable analysis in the polarized case has to be based on much more precise data in a far wider range of  $Q^2$  which can be obtained at future colliders such as the EIC.

## References

- [1] J. Ashman *et al.* [EMC], Phys. Lett. B **206** (1988) 364; Nucl. Phys. B **328** (1989) 1.
- [2] P. L. Anthony *et al.* [E142 Collaboration], Phys. Rev. D **54** (1996) 6620 [arXiv:hep-ex/9610007].
- [3] K. Ackerstaff *et al.* [HERMES Collaboration], Phys. Lett. B **404** (1997) 383 [arXiv:hep-ex/9703005].
- [4] K. Abe *et al.* [E154 Collaboration], Phys. Rev. Lett. **79** (1997) 26 [arXiv:hep-ex/9705012].
- [5] B. Adeva *et al.* [Spin Muon Collaboration], Phys. Rev. D **58** (1998) 112001.
- [6] K. Abe *et al.* [E143 collaboration], Phys. Rev. D **58** (1998) 112003 [arXiv:hep-ph/9802357].
- [7] A. Airapetian *et al.* [HERMES Collaboration], Phys. Rev. D **75** (2007) 012007 [arXiv:hep-ex/0609039].
- [8] P. L. Anthony *et al.* [E155 Collaboration], Phys. Lett. B **463** (1999) 339 [arXiv:hep-ex/9904002].
- [9] P. L. Anthony *et al.* [E155 Collaboration], Phys. Lett. B **493** (2000) 19 [arXiv:hep-ph/0007248].
- [10] X. Zheng *et al.*, The JLAB Hall A collaboration, Phys. Rev. **C70** (2004) 065207.
- [11] V. Y. Alexakhin *et al.* [COMPASS Collaboration], Phys. Lett. B **647** (2007) 8 [arXiv:hep-ex/0609038].
- [12] K. V. Dharmawardane *et al.* [CLAS Collaboration], Phys. Lett. B **641** (2006) 11 [arXiv:nucl-ex/0605028].
- [13] The CLAS collaboration, private communication.
- [14] M. G. Alekseev *et al.* [The COMPASS Collaboration], arXiv:1001.4654 [hep-ex].
- [15] K. Abe *et al.* [E154 Collaboration], Phys. Lett. B **405** (1997) 180 [arXiv:hep-ph/9705344].
- [16] J. Blümlein and H. Böttcher, arXiv:1005.3113 [hep-ph].

- [17] J. Blümlein and H. Böttcher, Nucl. Phys. B **636** (2002) 225 [arXiv:hep-ph/0203155].
- [18] J. Blümlein and A. Tkabladze, Nucl. Phys. B **553** (1999) 427 [arXiv:hep-ph/9812478].
- [19] M. Arneodo et al. (NMC), Phys. Lett. **B364** (1995) 107.
- [20] A. D. Watson, Z. Phys. **C12** (1982) 123; W. Vogelsang, Z. Phys. **C50** (1991) 275.
- [21] J. Blümlein, V. Ravindran and W. L. van Neerven, Phys. Rev. D **68** (2003) 114004 [arXiv:hep-ph/0304292].
- [22] M. Buza, Y. Matiounine, J. Smith *et al.*, Nucl. Phys. **B485** (1997) 420; [hep-ph/9608342]; I. Bierenbaum, J. Blümlein, S. Klein, [arXiv:0706.2738 [hep-ph]] and in preparation.
- [23] S. Wandzura, F. Wilczek, Phys. Lett. **B72** (1977) 195.
- [24] <http://www-zeuthen.desy.de/~blumlein>
- [25] J. Blümlein and A. Vogt, Phys. Rev. D **58** (1998) 014020 [arXiv:hep-ph/9712546].
- [26] S. I. Alekhin, J. Blümlein, Phys. Lett. **B594** (2004) 299. [hep-ph/0404034].
- [27] J. Blümlein and A. Vogt, Phys. Lett. B **370** (1996) 149 [arXiv:hep-ph/9510410]; Phys. Lett. B **386** (1996) 350 [arXiv:hep-ph/9606254].
- [28] J. Blümlein and A. Tkabladze, Nucl. Phys. Proc. Suppl. **79** (1999) 541 [arXiv:hep-ph/9905524].
- [29] M. Lacombe, B. Loiseau, R. Vinh Mau, J. Cote, P. Pires and R. de Turreil, Phys. Lett. B **101** (1981) 139; W. W. Buck and F. Gross, Phys. Rev. D **20** (1979) 2361; M. J. Zuilhof and J. A. Tjon, Phys. Rev. C **22** (1980) 2369; R. Machleidt, K. Holinde and C. Elster, Phys. Rept. **149** (1987) 1; A. Y. Umnikov, L. P. Kaptari, K. Y. Kazakov and F. C. Khanna, arXiv:hep-ph/9410241.
- [30] A. Airapetian *et al.* [ HERMES Collaboration ], Phys. Rev. **D71** (2005) 012003, [hep-ex/0407032].
- [31] D. de Florian, R. Sassot, M. Stratmann and W. Vogelsang, Phys. Rev. Lett. **101** (2008) 072001 [arXiv:0804.0422 [hep-ph]]; Phys. Rev. D **80** (2009) 034030 [arXiv:0904.3821 [hep-ph]].
- [32] M. Glück, E. Reya, M. Stratmann and W. Vogelsang, Phys. Rev. D **63** (2001) 094005 [arXiv:hep-ph/0011215].
- [33] M. Hirai, S. Kumano and N. Saito, Phys. Rev. D **74** (2006) 014015 [arXiv:hep-ph/0603213];
- [34] E. Leader, A. V. Sidorov, D. B. Stamenov, Phys. Rev. **D75** (2007) 074027. [hep-ph/0612360].
- [35] A. D. Martin, W. J. Stirling, R. S. Thorne and G. Watt, Eur. Phys. J. C **63** (2009) 189 [arXiv:0901.0002 [hep-ph]].
- [36] S. Bethke, Eur. Phys. J. C **64** (2009) 689 [arXiv:0908.1135 [hep-ph]].
- [37] J. Blümlein, H. Böttcher and A. Guffanti, Nucl. Phys. B **774** (2007) 182 [arXiv:hep-ph/0607200]; Nucl. Phys. Proc. Suppl. **135** (2004) 152 [arXiv:hep-ph/0407089].
- [38] M. Glück, E. Reya and C. Schuck, Nucl. Phys. B **754** (2006) 178 [arXiv:hep-ph/0604116]; P. Jimenez-Delgado and E. Reya, Phys. Rev. D **79** (2009) 074023 [arXiv:0810.4274 [hep-ph]].
- [39] S. Alekhin, J. Blümlein, S. Klein and S. Moch, Phys. Rev. D **81** (2010) 014032 [arXiv:0908.2766 [hep-ph]].
- [40] S.I. Alekhin, J. Blümlein, and S.-O. Moch, DESY 10-065, in preparation.
- [41] J. Blümlein and H. Böttcher, Phys. Lett. B **662** (2008) 336 [arXiv:0802.0408 [hep-ph]].
- [42] S.I. Alekhin, S. Kulagin and R. Petti, The low-Q deep-inelastic scattering data in the global fit of PDFs, Proc. 15th International Workshop on Deep-Inelastic Scattering and Related Subjects (DIS2007), Munich, Germany, 2007, Vol. 1, pp. 313.