

Studies of the internal properties of jets and jet substructure with the ATLAS Detector

David W. Miller* †

On behalf of the ATLAS Collaboration

SLAC National Accelerator Laboratory

E-mail: David.W.Miller@uchicago.edu

The internal structure of jets produced in pp collisions at the LHC is measured using the ATLAS detector in an inclusive jet sample corresponding to 35 pb^{-1} of pp collisions at $\sqrt{s} = 7 \text{ TeV}$. Classical jet shape and energy flow measurements are complemented with measurements of new substructure observables with comparisons made to several leading order parton shower Monte Carlo programs. The jet invariant mass and k_t splitting scale are measured for anti- k_t jets with a distance parameter of $R = 1.0$ and Cambridge-Aachen jets with $R = 1.2$. Furthermore, a splitting and filtering procedure is applied to the Cambridge-Aachen jets. These tools are then utilized for the first measurements of the filtered jet mass at the LHC in the inclusive jet sample as well the $W+1$ jet sample, in which a hadronic W mass peak is observed in the jet invariant mass spectrum. A sample of candidate boosted top quark events is also analyzed in detail for the jet substructure properties of hadronic “top-jets” in the final state.

The 2011 Europhysics Conference on High Energy Physics-HEP 2011,

July 21-27, 2011

Grenoble, Rhône-Alpes France

*Speaker.

†Now at The University Of Chicago, Enrico Fermi Institute.

1. Introduction

The internal structure of individual jets in ATLAS [1] is extended beyond classical [2, 3] jet shapes with measurements of the jet invariant mass and the k_t splitting scales. These studies are performed in the context of understanding QCD and the potential for hadronic heavy particle decays such as W bosons [4–6], top quarks [7–11], the Higgs boson [12, 13], and potential new particles [14], to be collimated into a single heavy jet characterized by distinct substructure and large mass. Two “fat” jet algorithms are used, along with the splitting and filtering jet grooming technique [12, 13]. The data are corrected for detector effects and compared to the predictions from several Monte Carlo simulations implementing leading-order perturbative QCD matrix elements supplemented with parton showers. A first measurement of the jet invariant mass in ATLAS is made, and an additional jet substructure observable, the first k_t splitting scale or $\sqrt{d_{12}}$, is measured for the first time at the LHC. A sample of candidate boosted top quark events exhibits the expected jet substructure properties and a hadronic W mass peak is observed in the jet invariant mass spectrum.

2. Data selection and Monte Carlo samples

Events collected by the ATLAS detector are selected to have a high- p_T jet ($p_T > 300$ GeV) in the final state using a fully efficient inclusive jet trigger corresponding to an integrated luminosity of approximately 35 pb^{-1} . The jet mass and k_t splitting scales are measured for jets reconstructed by the anti- k_t [15, 16] algorithm with a distance parameter $R = 1.0$ and C/A, $R = 1.2$ [17, 18]. Jet quality criteria reject events contaminated by beam-related backgrounds or detector defects.

The data are compared to events simulated using several Monte Carlo (MC) programs that are also re-weighted to match the number of multiple proton-proton interactions observed. ALPGEN 2.13 [19] is interfaced to HERWIG 6.510 [20] for the parton shower and hadronization models and to JIMMY 4.31 [21] for the underlying event model. Exact LO pQCD matrix elements with up to 6 partons in the final state are used by ALPGEN. The LO MC programs (for inclusive jet production) PYTHIA 6.423 [22] and HERWIG++ 2.4 [23] rely on the parton shower to produce the equivalent of multi-parton final states. PYTHIA and HERWIG++ provide shower models which are p_T^2 -ordered and angular-ordered, respectively. Comparisons of the jet mass in Section 3 are also made to HERWIG interfaced to JIMMY for the underlying event model.

3. Jet substructure

The k_\perp splitting scale, $\sqrt{d_{ij}}$, is defined by reclustering a jet with the k_\perp algorithm [24, 25] such that $\sqrt{d_{ij}} = \min(p_{T,i}, p_{T,j}) \times \delta R_{i,j}$, where $\delta R_{i,j} = \sqrt{d\phi_{i,j}^2 + dy_{i,j}^2}$ and i, j represent the last two proto-jets in the recombination [26]. For C/A jets, the filtering procedure identifies relatively hard, symmetric splittings in a jet that contribute significantly to the jet invariant mass [26].

The jet mass and splitting scale are corrected for detector effects via a bin-by-bin unfolding procedure. Bin sizes are chosen so that bin migrations are small and the per-bin purity $>50\%$.

Fully corrected hadron-level distributions of the jet mass and $\sqrt{d_{12}}$ are shown in Figure 1 [26]. HERWIG++ tends to predict slightly more massive C/A jets than supported by the data whereas

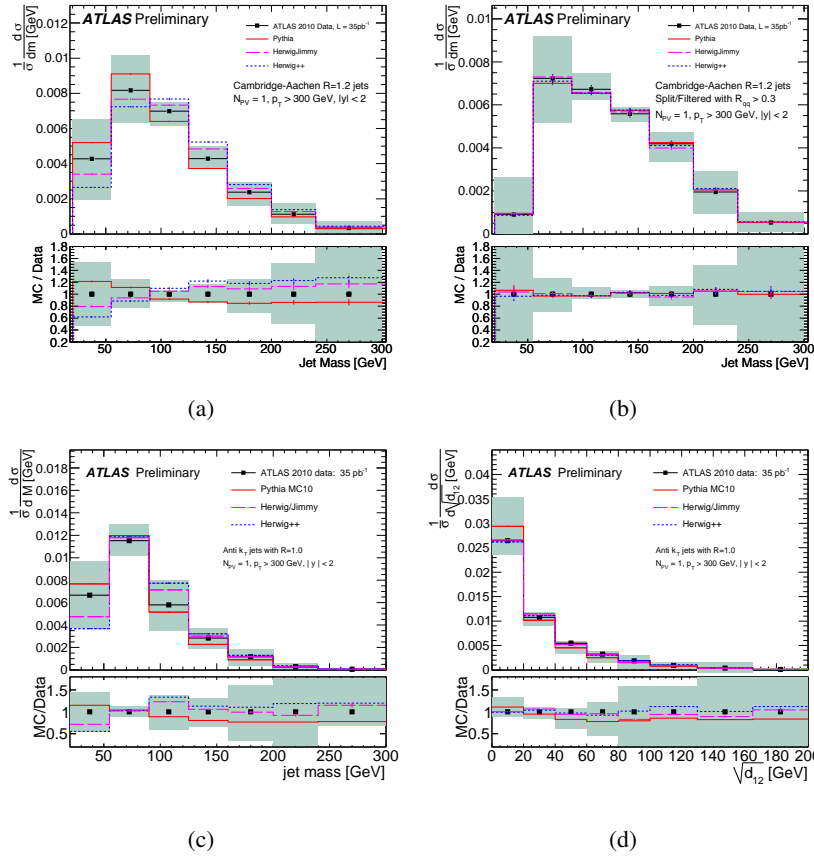


Figure 1: Invariant mass spectrum of (a) Cambridge-Aachen jets before and (b) after the filtering procedure has been applied. For anti- k_t jets, (c) the invariant mass spectrum and the (d) $\sqrt{d_{12}}$ spectrum for the same jets. All distributions are fully corrected for detector effects, systematic uncertainties are depicted by the shaded band [26].

PYTHIA and HERWIG/JIMMY yield measurements which bracket the data and agree to within systematic uncertainties. Notably, the differences between the mass distributions predicted by the various MC programs are greatly reduced after the filtering procedure. This observation suggests that the jet mass after the filtering procedure accurately represents the true hard components within the jets which are modeled well by the simulations.

A similar conclusion may be drawn in the case of anti- k_t , $R = 1.0$ jets as for the C/A jets, wherein HERWIG++ tends to predict slightly more massive jets than observed in the data. In the case of anti- k_t , the high mass tail of the distribution is better reflected in the HERWIG/JIMMY and HERWIG++ MC simulations than in PYTHIA.

Studies show [26] that the average jet mass grows linearly with R in the case of zero additional pp interactions (pile-up), whereas the slope as a function of pile-up shows an R^3 dependence. The filtering procedure removes this dependence to within statistical and systematic uncertainties.

4. Boosted heavy particles

The use of jet substructure is tested in a small sample of candidate boosted top quark and

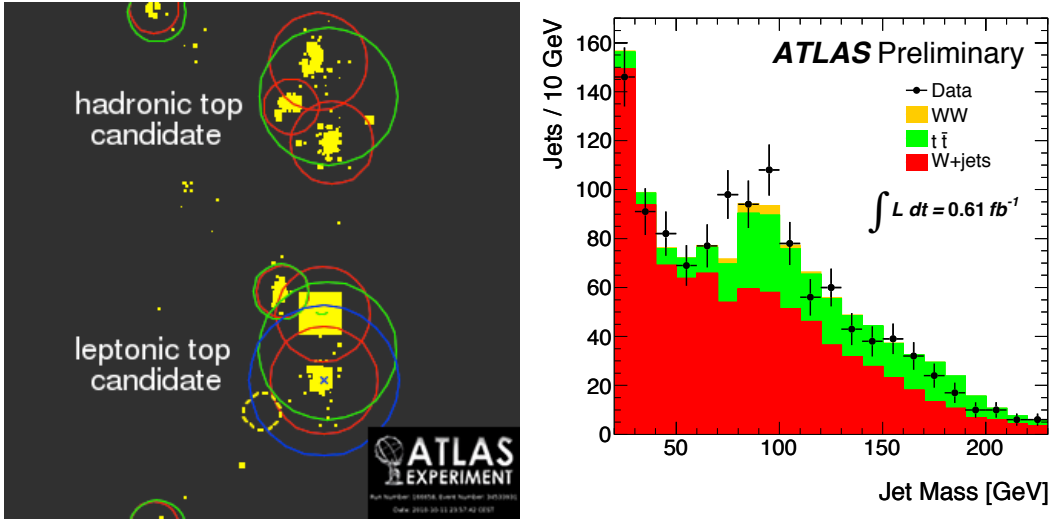


Figure 2: (left) Candidate boosted top quark candidate. Details of this event are described in Ref. [26]. (right) Jet invariant mass distribution in $W + 1$ jet events [27].

hadronically decaying W bosons in a $W+1$ jet sample. Fully reconstructed top quark pair events are selected in the lepton+jets channel to have $m_{t\bar{t}} > 700$ GeV. Figure 2 shows one of the selected events wherein the anti- k_r , $R = 1.0$ jet corresponding to the hadronic top quark decay has $p_T = 327$ GeV and $m^{\text{jet}} = 206$ GeV as well as $\sqrt{d_{12}} = 110$ GeV and $\sqrt{d_{23}} = 40$ GeV.

Candidate hadronic W events are selected to contain a $W \rightarrow \ell\nu$ candidate with $p_T^W > 200$ GeV [27]. The jet mass distribution of filtered C/A, $R = 1.2$ jets with $p_T > 180$ GeV and $\Delta\phi_{W,\text{jet}} > 1.2$ in these events is shown in Figure 2. The three main contributions to these events are $t\bar{t}$ (generated with MC@NLO+HERWIG/JIMMY [28,29]), W +jets (generated with ALPGEN+HERWIG/JIMMY), and WW (generated with HERWIG/JIMMY), all normalized to the highest order cross-section available (see Ref. [27] for more details). The good agreement between data and the various MC simulations suggests both that the tools described above are well described in a complex physics environment and that the systematics are generally well under control.

5. Conclusions

The substructure of hadronic jets is studied in terms of the jet mass and k_r splitting scales for anti- k_r , $R = 1.0$ and C/A, $R = 1.2$ jets, as well as C/A jets with filtering applied. In all observables the PYTHIA and HERWIG samples are in agreement with data to within the systematic uncertainties. The HERWIG++ prediction appears to be slightly disfavoured in the unfiltered C/A mass spectra, producing jets with a higher mass than found in data.

Overall it is clear that ATLAS is capable of delivering measurements of the variables considered in this study and that these observables are well modeled by leading order Monte Carlo. Early applications of these techniques are already demonstrated through the tagging of candidate boosted top quarks and the observation of fully hadronic W decays. It is expected that searches for boosted Higgs bosons, supersymmetric particles, and top-quark resonances will benefit from such advanced techniques.

References

- [1] ATLAS Collaboration. The ATLAS Experiment at the CERN Large Hadron Collider. *JINST*, 3:S08003, 2008.
- [2] ATLAS Collaboration. Study of Jet Shapes in Inclusive Jet Production in pp Collisions at $\sqrt{s} = 7$ TeV using the ATLAS Detector. *Phys. Rev. D*, 83(5):052003, 2011, [arXiv:1101.0070 \[hep-ex\]](#).
- [3] ATLAS Collaboration. Jet Shapes in ATLAS and MC modeling. *ATL-PHYS-PUB-2011-010* (<http://cdsweb.cern.ch/record/1368881>), 2011.
- [4] M. H. Seymour. Searches for new particles using cone and cluster jet algorithms: A Comparative study. *Z. Phys.*, C62:127–138, 1994.
- [5] J. M. Butterworth, B. E. Cox, and J. R. Forshaw. WW scattering at the CERN LHC. *Phys. Rev.*, D65:096014, 2002, [arXiv:hep-ph/0201098 \[hep-ph\]](#).
- [6] ATLAS Collaboration. Expected Performance of the ATLAS Experiment - Detector, Trigger and Physics. [arXiv:0901.0512 \[hep-ex\]](#).
- [7] ATLAS Collaboration. Prospects for top anti-top resonance searches using early ATLAS data. *ATL-PHYS-PUB-2010-008* (<http://cdsweb.cern.ch/record/1278454>), 2010.
- [8] ATLAS Collaboration. Reconstruction of High Mass $t\bar{t}$ Resonances in the Lepton+Jets Channel. *ATL-PHYS-PUB-2009-081* (<http://cdsweb.cern.ch/record/1177410>), 2009.
- [9] ATLAS Collaboration. High p_T Hadronic Top Quark Identification Part 1: Jet Mass and YSplitter. *ATL-PHYS-CONF-2008-008* (<http://cdsweb.cern.ch/record/1077731>), 2009.
- [10] S. Chekanov and J. Proudfoot. Searches for TeV-scale particles at the LHC using jet shapes. *Phys. Rev.*, D81:114038, 2010, [arXiv:1002.3982 \[hep-ph\]](#).
- [11] S. Chekanov, C. Levy, J. Proudfoot, and R. Yoshida. New approach for jet-shape identification of TeV-scale particles at the LHC. *Phys. Rev.*, D82:094029, 2010, [arXiv:1009.2749 \[hep-ph\]](#).
- [12] J. M. Butterworth et al. Jet substructure as a new Higgs search channel at the LHC. *Phys. Rev. Lett.*, 100:242001, 2008, [arXiv:0802.2470 \[hep-ph\]](#).
- [13] ATLAS Collaboration. ATLAS Sensitivity to the Standard Model Higgs in the HW and HZ Channels at High Transverse Momenta. *ATL-PHYS-PUB-2009-088* (<http://cdsweb.cern.ch/record/1201444>), 2009.
- [14] J. M. Butterworth et al. Discovering baryon-number violating neutralino decays at the LHC. *Phys. Rev. Lett.*, 103:241803, 2009, [arXiv:0906.0728 \[hep-ph\]](#).
- [15] M. Cacciari, G. P. Salam, and G. Soyez. The anti- k_r jet clustering algorithm. *JHEP*, 04:063, 2008, [arXiv:0802.1189 \[hep-ph\]](#).
- [16] M. Cacciari and G. P. Salam. Dispelling the N^3 myth for the k_r jet-finder. *Phys. Lett. B*, 641(1):57–61, 2006, [arXiv:0707.1378 \[hep-ph\]](#).
- [17] Y. L. Dokshitzer et al. Better Jet Clustering Algorithms. *JHEP*, 08:001, 1997, [arXiv:hep-ph/9707323 \[hep-ph\]](#).
- [18] M. Wobisch and T. Wengler. Hadronization corrections to jet cross sections in deep-inelastic scattering. [arXiv:hep-ph/9907280 \[hep-ph\]](#).
- [19] M. L. Mangano et al. ALPGEN, a generator for hard multiparton processes in hadronic collisions. *JHEP*, 07:001, 2003, [arXiv:hep-ph/0206293 \[hep-ph\]](#).

- [20] G. Corcella et al. HERWIG 6: an event generator for hadron emission reactions with interfering gluons (including supersymmetric processes). *JHEP*, 2001(01):010–010, January 2001, [arXiv:hep-ph/0011363](https://arxiv.org/abs/hep-ph/0011363) [hep-ph].
- [21] J. M. Butterworth, J. R. Forshaw, and M. H. Seymour. Multiparton interactions in photoproduction at HERA. *Z. Phys.*, C72:637–646, 1996, [arXiv:hep-ph/9601371](https://arxiv.org/abs/hep-ph/9601371) [hep-ph].
- [22] T. Sjöstrand. High-energy-physics event generation with PYTHIA 6.1. *Computer Physics Communications*, 135(2):238–259, 2001, [arXiv:hep-ph/0010017](https://arxiv.org/abs/hep-ph/0010017) [hep-ph].
- [23] M. Bahr et al. Herwig++ Physics and Manual. *Eur. Phys. J.*, C58:639–707, 2008, [arXiv:0803.0883](https://arxiv.org/abs/0803.0883) [hep-ph].
- [24] S. Catani, Y. L. Dokshitzer, M. H. Seymour, and B. R. Webber. Longitudinally invariant k_t -clustering algorithms for hadron hadron collisions. *Nucl. Phys.*, B406:187–224, 1993.
- [25] S. D. Ellis and D. E. Soper. Successive combination jet algorithm for hadron collisions. *Phys. Rev.*, D48:3160–3166, 1993, [arXiv:hep-ph/9305266](https://arxiv.org/abs/hep-ph/9305266).
- [26] ATLAS Collaboration. Measurement of Jet Mass and Substructure for Inclusive Jets in $\sqrt{s} = 7$ TeV pp Collisions with the ATLAS Experiment. *ATLAS-CONF-2011-073* (<http://cdsweb.cern.ch/record/1352454>), 2011.
- [27] ATLAS Collaboration. Search for the Standard Model Higgs boson produced in association with a vector boson and decaying to a b-quark pair with the ATLAS detector at the LHC. *ATLAS-CONF-2011-103* (<http://cdsweb.cern.ch/record/1369826>), 2011.
- [28] S. Frixione and B. R. Webber. Matching NLO QCD computations and parton shower simulations. *JHEP*, 06:029, 2002, [arXiv:hep-ph/0204244](https://arxiv.org/abs/hep-ph/0204244) [hep-ph].
- [29] S. Frixione, P. Nason, and B. R. Webber. Matching NLO QCD and parton showers in heavy flavour production. *JHEP*, 08:007, 2003, [arXiv:hep-ph/0305252](https://arxiv.org/abs/hep-ph/0305252) [hep-ph].