

Diffractive mechanisms in $pp \rightarrow pp\pi^0$ reaction at high energies

Piotr LEBIEDOWICZ^{*†}

Institute of Nuclear Physics PAN, PL-31-342 Cracow, Poland

E-mail: Piotr.Lebiedowicz@ifj.edu.pl

Antoni SZCZUREK

University of Rzeszów, PL-35-959 Rzeszów, Poland, and

Institute of Nuclear Physics PAN, PL-31-342 Cracow, Poland

E-mail: Antoni.Szczurek@ifj.edu.pl

We present a study of exclusive production of π^0 meson in proton-proton collisions at high energies. Both diffractive bremsstrahlung (Drell-Hiida-Deck type model), photon-photon, photon-omega and photon-odderon exchange mechanisms are included in the calculation. The π^0 -bremsstrahlung contribution dominates at large (forward, backward) pion rapidities and contributes at small $\pi^0 p$ invariant mass and could be therefore misinterpreted as the Roper resonance $N^*(1440)$. Large cross sections of the order of mb are predicted. We predict strong dependence of the slope in t (squared four-momentum transfer between ingoing and outgoing proton) on the mass of the supplementary excited $\pi^0 p$ system. At high energy and midrapidity, the photon-photon contribution dominates over the diffractive components, however, the corresponding cross section is rather small. The photon-odderon and odderon-photon contributions are included in addition and first estimates (upper limits) of their contributions are presented. We suggest a search for the odderon contribution at midrapidity and at $p_{\perp, \pi^0} \sim 0.5$ GeV. Our predictions are ready for verification at LHC. The bremsstrahlung mechanisms discussed here contribute also to the $pp \rightarrow p(n\pi^+)$ reaction. Both channels give a sizable contribution to the low-mass single diffractive cross section and must be included in extrapolating the measured experimental single diffractive cross section.

XXI International Workshop on Deep-Inelastic Scattering and Related Subject -DIS2013,

22-26 April 2013

Marseilles, France

^{*}Speaker.

[†]This work was supported by the Polish National Science Centre (on the basis of decision No. DEC-2011/01/N/ST2/04116 and DEC-2011/01/B/ST2/04535).

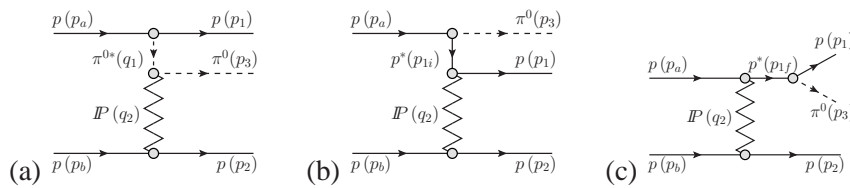


Figure 1: Diagrams of the π^0 -bremsstrahlung amplitudes driven by the pomeron (IP) exchange in the pp -collisions: (a) pion exchange, (b) proton exchange, and (c) direct production.

1. Introduction

We discuss the exclusive $pp \rightarrow pp\pi^0$ process at high energies, see [1].¹ This reaction was measured in detail only near to the pion threshold. A nice summary of the intermediate energy data can be found in Ref.[4]. In this region of energy the corresponding cross section systematically decreases which is consistent with the meson exchange picture. The $pp \rightarrow p(n\pi^+)$ and $np \rightarrow (p\pi^-)p$ reactions were measured at ISR and Fermilab [5]. As discussed in [6] the dominant hadronic bremsstrahlung-type mechanism is the Drell-Hiida-Deck mechanism for diffractive production of πN final states in NN collisions [7]. The $pp \rightarrow pp\pi^0$ process can be measured with the help of the forward detectors at the LHC.²

In [8, 9] a study of pseudoscalar mesons produced centrally by the WA102 Collaboration at $\sqrt{s} = 29.1$ GeV was performed. The results show that the η and η' mesons appear to have a similar production mechanism which considerably differs from that for the π^0 production [8]. The WA102 Collaboration concentrated on central production of mesons and eliminates contribution comes from diffractive mechanisms discussed in [1]. Reactions of this type $pp \rightarrow pMp$ are expected to be mediated by double exchange processes. For instance, the η and η' mesons are produced dominantly by a mixture of pomeron-pomeron, reggeon-pomeron, and reggeon-reggeon exchanges (see [10]). For the central exclusive π^0 production at intermediate energies the ρ - ω , ρ - a_2 exchanges may be the dominant mechanism.

The π^0 can be also produced by $\gamma\gamma$, $\gamma\omega$, and $\gamma\mathcal{O}$ exchanges. The search performed at HERA [11] was negative and found only an upper limit for this process $\sigma_{\gamma p \rightarrow \pi^0 p} < 49$ nb. In Refs. [12, 13] the authors discussed some results of exclusive pseudoscalar meson production in high energy ep scattering. As shown in Ref.[13, 14] the photon exchange is larger than the odderon exchange only at very small transverse momenta of π^0 . Here we shall consider the odderon exchange processes using a simple phenomenological approach and estimate their contributions in the pp -collisions.

2. Sketch of formalism

The dominant diffractive bremsstrahlung mechanisms for the exclusive $pp \rightarrow pp\pi^0$ reaction

¹The exclusive pion production mechanism is similar to $pp \rightarrow pp\omega$ [2] and $pp \rightarrow pp\gamma$ [3] processes.

²In the past we have studied exclusive pion/kaon pairs in the $pp \rightarrow pp\pi^+\pi^-$ [15, 16], $pp \rightarrow nn\pi^+\pi^+$ [17] and $pp \rightarrow ppK^+K^-$ [18] processes. There pomeron-pomeron and pomeron-reggeon exchanges are the dominant mechanisms. Such processes could be measured with the help of the main ATLAS or CMS detectors (for charged pions/kaons detection), ALFA [19] or TOTEM [20] detectors (for protons tagging), and the Zero Degree Calorimeters (ZDCs) [21] (for neutrons detection).

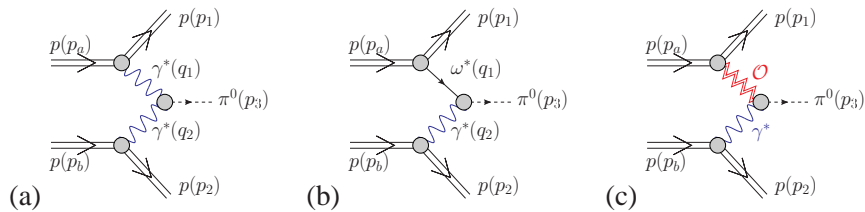


Figure 2: A sketch of the photon-photon (a), photon-omega meson (b), and photon-odderon (c) exchanges in the $pp \rightarrow pp\pi^0$ reaction.

driven by pomeron exchange are depicted in Fig.1. The formalism and more details has been shown and discussed elsewhere [1]. In our non-resonant model we take into account also absorption effects, see Section II B of [1].³ The new mechanisms, never discussed so far in the literature, are shown schematically in Fig. 2.

3. Results

Now we present some distributions of the exclusive π^0 meson production in proton-proton collisions for all considered processes from Figs.1 and 2. The rapidity distributions of π^0 are shown in Fig.3 (left panel) at $\sqrt{s} = 45$ GeV (ISR), 500 GeV (RHIC) and 14 TeV (LHC). If energy increases the dominant π^0 -bremsstrahlung contributions (solid lines) and omega-photon (photon-omega) exchange processes (dashed lines) become better separated and occupy forward/backward region of rapidity. The photon-photon fusion contribution (dotted lines) dominates over the diffractive mechanism at the LHC energy and midrapidity region $-2 < y_{\pi^0} < 2$. In the right panel we show predictions of the odderon contributions for the HERA upper limit ($\sigma_{\gamma p \rightarrow \pi^0 p} = 49$ nb) and for the Ewerz-Nachtmann estimate ($\sigma_{\gamma p \rightarrow \pi^0 p} = 6$ nb) at $\sqrt{s} = 14$ TeV. The total cross section in the first case is less than 20 nb in the rapidity region $|y_{\pi^0}| < 2.5$. The corresponding curve is more than an order of magnitude larger than the photon-photon contribution. The cut on meson p_{\perp, π^0} should enhance the relative odderon contribution (see [1] for more details).

In Fig.4 we present differential distributions in π^0 rapidity, relative azimuthal angle between outgoing protons and $p\pi^0$ invariant mass for the π^0 -bremsstrahlung mechanism. The difference between the solid ($\Lambda_N = \Lambda_\pi = 1$ GeV) and long-dashed ($\Lambda_N = 0.6$ GeV and $\Lambda_\pi = 1$ GeV) curves represents the uncertainties on the hadronic form factors; see [1]. In addition, we show the individual contributions of diagrams given in Fig.1 to the cross section. We observe a large cancellation between the two terms in the amplitude (between the initial (p -exchange) and the final state radiation (direct production)). Absorptive corrections cause damping of the cross section by a factor 2 to 3 and modify the shape of some distributions. As can be seen in the middle panel the diffractive contribution is peaked at the back-to-back configuration ($\phi_{12} = \pi$) in contrast to the $\gamma\gamma$ - or

³There are also resonance contributions, due to diffractive excitation of some nucleon resonances and their subsequent decays into the $p + \pi^0$ ($\bar{p} + \pi^0$) channels. The dominant contributions are due to N^* resonant states being members of the nucleon trajectory (the $N^*(1680) 5/2^+$ state). Although a huge contribution of the Roper resonance $N^*(1440)$ was suggested recently [22], as discussed in [1], their contribution may be to some extent an artifact of a fit which does not include the π^0 -bremmstrahlung mechanism.

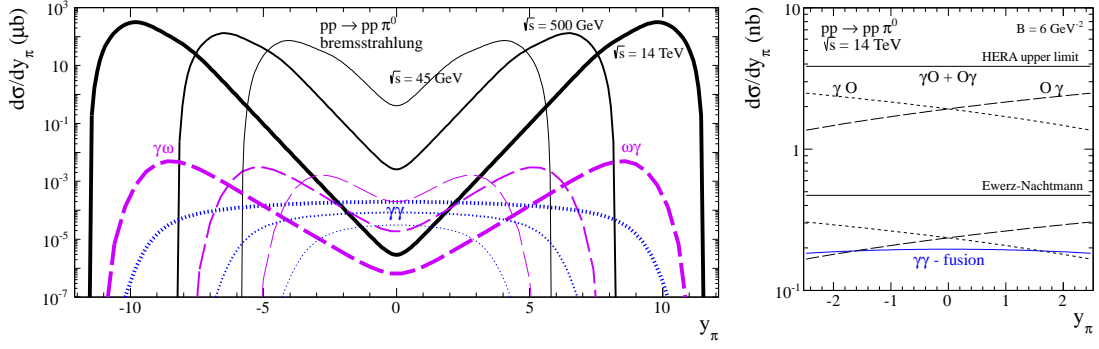


Figure 3: The Born distributions in rapidity of π^0 at $\sqrt{s} = 45$ GeV (ISR), 500 GeV (RHIC), and 14 TeV (LHC). The π^0 -bremsstrahlung contribution (black solid lines) and $\omega\gamma$ ($\gamma\omega$) exchanges (violet dashed lines) peaks at forward (backward) region of rapidity, respectively, while $\gamma\gamma$ fusion (blue dotted lines) contributes at midrapidity. In this calculation we have used $\Lambda_N = \Lambda_\pi = 1$ GeV of the hadronic form factors. In the right panel, in addition, we show results from $\gamma\theta$ - and $\theta\gamma$ -fusion for two estimates of the $\gamma p \rightarrow \pi^0 p$ cross section (energy independent). Individual contributions of photon-odderon (short dashed line) and odderon-photon (long dashed line) are shown separately.

$\gamma\omega$ -fusion. The discussed $pp \rightarrow pp\pi^0$ process gives a sizeable contribution to the low mass single diffractive cross section.

In Fig.5 we show some two-dimensional distributions for the diffractive contribution at $\sqrt{s} = 14$ TeV with absorptive corrections. The distributions in t_1 or t_2 (left panel) are different because we have limited to the case of $y_{\pi^0} > 0$ only. The t -distributions discussed here could in principle be obtained with the TOTEM detector at CMS to supplement the ZDC detector for the measurement of neutral pions. Similar analysis could be done by the ALFA detector for proton tagging at ATLAS. One can observe different behavior of slope in t_2 for different masses of the $p\pi^0$ system (middle panel). A similar effect was observed for $pp \rightarrow p(n\pi^+)$ and $np \rightarrow (p\pi^-)p$ reactions at much lower energies [5]. In right panel the sizeable correlations between pion rapidity and transverse momentum can be observed which is partially due to interference of different amplitudes.

4. Conclusions

We have included the π^0 -bremsstrahlung from the initial or final proton, diffractive π^0 -rescattering, photon-photon, photon-omega and photon-odderon fusion processes. We have found very large cross sections of the order of mb. The dominant contributions are placed at large rapidities where they could be measured with the help of the forward detectors at the LHC. The total (integrated over phase space) cross section is almost energy independent. Absorptive effects lower the cross section by a factor 2 to 3; see Table I in [1]. At the LHC the two-photon fusion mechanism “wins” with the diffractive mechanisms at midrapidity. However, the transverse momenta of neutral pions in this region are very small and therefore such pions are very difficult to measure. The $\gamma\omega$ or $\omega\gamma$ exchanges have been found to be significant only in backward or forward rapidities, respectively, and are small at midrapidities due to ω reggeization.

We have also presented first estimates of the photon-odderon and odderon-photon contributions based on the upper limit of the $\gamma p \rightarrow \pi^0 p$ cross section obtained at the HERA as well as

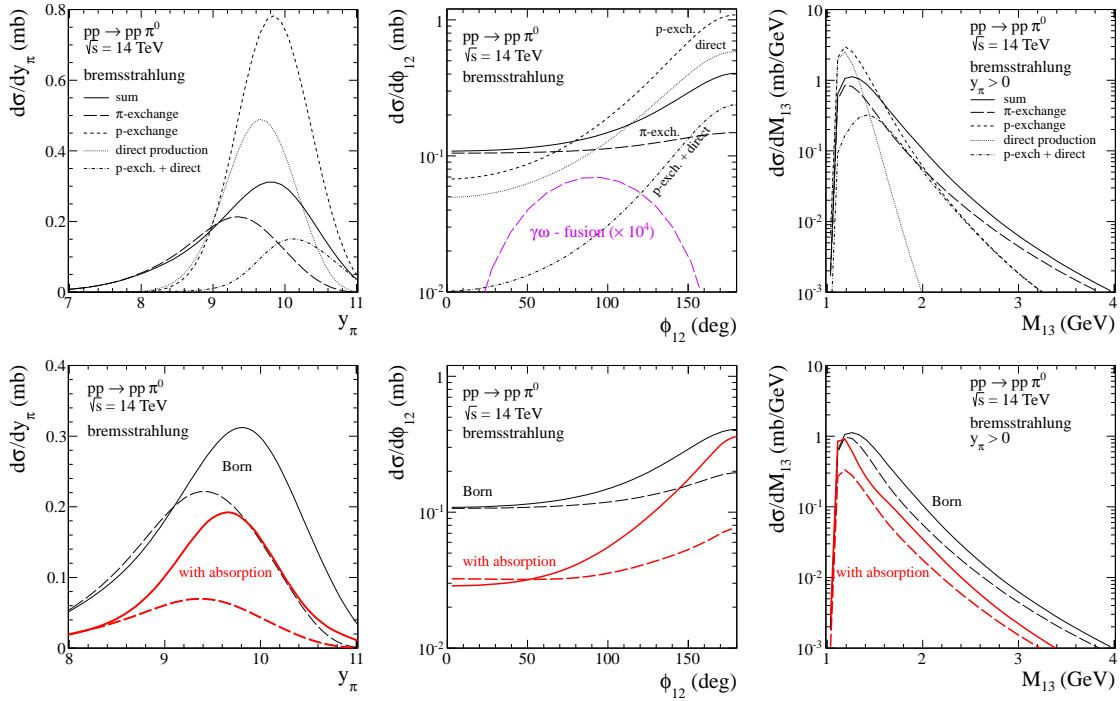


Figure 4: Distributions in π^0 rapidity, relative azimuthal angle between outgoing protons and $p\pi^0$ invariant mass for the π^0 -bremsstrahlung mechanism at $\sqrt{s} = 14$ TeV. The individual contributions to the cross section are shown separately. Results of calculations without absorption effects (upper black lines) and with absorption effects (lower red lines) are presented. The solid lines correspond to the form factor parameters $\Lambda_N = \Lambda_\pi = 1$ GeV while the dashed lines are for $\Lambda_N = 0.6$ GeV and $\Lambda_\pi = 1$ GeV.

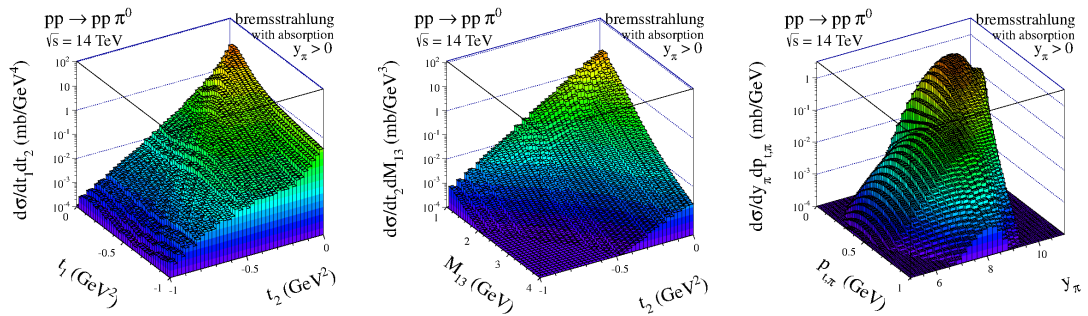


Figure 5: Distributions in (t_1, t_2) , (t_2, M_{13}) and $(y_{\pi^0}, p_{\perp, \pi^0})$ spaces at $\sqrt{s} = 14$ TeV for the π^0 -bremsstrahlung contribution in forward region ($y_{\pi^0} > 0$). Here absorptive corrections are included and $\Lambda_N = \Lambda_\pi = 1$ GeV.

estimates based on a nonperturbative approach of Ewerz and Nachtmann ([14], [23]) which makes use of chiral symmetry and PCAC. Based on the HERA upper limit we conclude that the cross section for the contribution to the $pp \rightarrow pp\pi^0$ reaction is smaller than 20 nb in the rapidity region $|y_{\pi^0}| < 2.5$. Any deviation from the $\gamma\gamma \rightarrow \pi^0$ contribution to transverse momentum distribution of neutral pions at midrapidity would be a potential signal of photon-odderon (odderon-photon) contributions. One can expect potential deviations from the photon-photon contribution at $p_{\perp,\pi^0} \sim 0.5$ GeV. This requires dedicated studies if the considered process could be measured at the LHC.

We have calculated differential cross sections for the exclusive $pp \rightarrow pp\pi^0$ reaction at high energies. If one limits to separate regions of $y_{\pi^0} < 0$ or $y_{\pi^0} > 0$ (one-side excitation), then the distributions in proton transverse momenta t_1 and t_2 are quite different – one reflecting the pion/nucleon exchange and the second reflecting the pomeron exchange. The same is true for the $p_{\perp,1}$ and $p_{\perp,2}$ distributions, see [1]. Analysis of such details would be a useful test of the model. The distribution in the mass of the excited $\pi^0 p$ system peaks at small $M_{\pi p}$ and quickly drops when the mass increases. Such a distribution reminds the spectral shape of the Roper resonance fitted recently to an old single-diffractive data. We have obtained an interesting correlation between the mass of the excited system and the slope of the t distributions well represented in a two-dimensional plot $d\sigma/dtdM(t, M)$. Particularly interesting is the distribution in azimuthal angle between outgoing protons. The distribution has a maximum at relative angle $\phi_{12} = \pi$. The sensitive nature of the cancellation between proton-exchange and direct production amplitudes leads to a situation where minor changes in the parametrizations of these amplitudes can have large effects on discussed distributions.

The reaction discussed here is interesting also in a much broader context. First of all, it may constitute a sizable fraction of the pion inclusive cross section at very forward/backward (pseudo)rapidities. Second, it leads to a production of very energetic photons ($\sim 0.5 - 2$ TeV) from the decay of the forward π^0 's. Third, the π^0 -bremmstrahlung mechanism sizably contributes to the single diffractive cross section and as a consequence to the total inelastic cross section. This contribution is not included in any existing Monte Carlo code.

References

- [1] P. Lebedowicz and A. Szczurek, Phys. Rev. **D87** (2013) 074037.
- [2] A. Cisek, P. Lebedowicz, W. Schäfer and A. Szczurek, Phys. Rev. **D83** (2011) 114004.
- [3] P. Lebedowicz and A. Szczurek, in print of Phys. Rev. D, [hep-ph/1303.2882];
P. Lebedowicz and A. Szczurek, *Exclusive diffractive photon bremsstrahlung at high energies*, in proceedings of DIS2013 conference.
- [4] E. Dahl-Jensen *et al.*, Nucl. Phys. **B87** (1975) 426.
- [5] S. Humble, Nucl. Phys. **B86** (1975) 285; H. de Kerret *et al.*, Phys. Lett. **B63** (1976) 477; G.C. Mantovani *et al.*, Phys. Lett. **B64** (1976) 471; A. Babaev *et al.*, Nucl. Phys. **B116** (1976) 28; J. Biel *et al.*, Phys. Lett. **B65** (1976) 291; J. Biel *et al.*, Phys. Rev. **D18** (1978) 3079.
- [6] A. B. Kaidalov, Phys. Rept. **50** (1979) 157;
G. Alberi and G. Goggi, Phys. Rep. **74** (1981) 1;
K.A. Goulianos, Phys. Rept. **101** (1983) 169.

- [7] S.D. Drell and K. Hiida, Phys. Rev. Lett. **7** (1961) 199;
R.T. Deck, Phys. Rev. Lett. **13** (1964) 169.
- [8] D. Barberis *et al.* (WA102 Collaboration), Phys. Lett. **B427** (1998) 398.
- [9] A. Kirk, Phys. Lett. **B489** (2000) 29.
- [10] P. Lebiedowicz, O. Nachtmann and A. Szczurek, a paper in preparation.
- [11] C. Adloff *et al.* (H1 Collaboration), Phys. Lett. **B544** (2002) 35.
- [12] W. Kilian and O. Nachtmann, Eur. Phys. J. **C5** (1998) 317.
- [13] E.R. Berger, A. Donnachie, H.G. Dosch, W. Kilian, O. Nachtmann and M. Rüeter, Eur. Phys. J. **C9** (1999) 491.
- [14] A. Donnachie, H.G. Dosch and O. Nachtmann, Eur. Phys. J **C45** (2006) 771.
- [15] P. Lebiedowicz and A. Szczurek, Phys. Rev. **D81** (2010) 036003.
- [16] R. Staszewski, P. Lebiedowicz, M. Trzebiński, J. Chwastowski and A. Szczurek, Acta Phys. Polon. **B42** (2011) 1861.
- [17] P. Lebiedowicz and A. Szczurek, Phys. Rev. **D83** (2011) 076002.
- [18] P. Lebiedowicz and A. Szczurek, Phys. Rev. **D85** (2012) 014026.
- [19] P. Jenni, M. Nordberg, M. Nessi and K. Jon-And, Report number: ATLAS-TDR-18, CERN-LHCC-2008-004.
- [20] G. Anelli *et al.* (TOTEM Collaboration), JINST **3** (2008) S08007.
- [21] O.A. Grachov *et al.* (CMS Collaboration), J. Phys. Conf. Ser. **160** (2009) 012059;
P. Jenni, M. Nessi and M. Nordberg, Report number: LHCC-I-016, CERN-LHCC-2007-001.
- [22] L. Jenkovszky, O. Kuprash, R. Orava and A. Saliı̄, [hep-ph/1211.5841].
- [23] C. Ewerz and O. Nachtmann, Eur. Phys. J. **C49** (2007) 685.