

Global dark matter limits from a combined analysis of MAGIC and *Fermi*-LAT data

Javier Rico*

Institut de Física d'Altes Energies (IFAE), E-08193 Bellaterra, Spain
E-mail: jrico@ifae.es

Matthew Wood

*Kavli Institute for Particle Astrophysics and Cosmology,
Department of Physics and SLAC National Accelerator Laboratory*
E-mail: mdwood@slac.stanford.edu

Jelena Aleksić

Institut de Física d'Altes Energies (IFAE), E-08193 Bellaterra, Spain
E-mail: jelena@ifae.es

Alex Drlica-Wagner

Center for Particle Astrophysics, Fermi National Accelerator Laboratory
E-mail: kadrlica@fnal.gov

for the MAGIC[†] and the *Fermi*-LAT[‡] Collaborations

Gamma-ray instruments like the *Fermi*-LAT (in space) and the MAGIC telescopes (on the ground) are sensitive to overlapping and complementary ranges of dark matter particle mass, and have dedicated programs to look for dark matter signals coming from the Galactic Center, galaxy clusters, dwarf satellite galaxies and others. The universality of dark matter properties allows the combination of data from different experiments and/or observational targets into a global and sensitive-optimized search. For a given dark matter particle model, a joint likelihood function can be written as the product of the particular likelihood functions for each of the measurements/instruments – the advantage of such an approach is that the details of each experiment do not need to be combined or averaged. We have implemented this analysis framework and applied it to the MAGIC and *Fermi*-LAT observations of dwarf satellite galaxies. Here we present the analysis method and the obtained results: the most constraining bounds to dark matter properties for masses between 10 GeV and 100 TeV from dwarf galaxies observations. The approach is completely generic and could be used in the future to merge our results with those from other instruments (H.E.S.S., VERITAS, CTA and/or HAWK), sensitive to the same region of the dark matter parameter space.

The European Physical Society Conference on High Energy Physics
22–29 July 2015
Vienna, Austria

*Speaker.

[†]<http://magic.mpp.mpg.de>

[‡]<http://www-glast.stanford.edu>

1. Introduction

Dark matter (DM) distributes in the Universe in halos that host galaxy clusters, galaxies and galactic DM “clumps”. A promising way to identify the nature of DM and measure its properties is to search for the Standard Model (SM) particles produced in its annihilation or decay at these sites. Gamma rays and neutrinos are ideal messengers for directional DM searches, since they are the only stable neutral SM particles, and can thus travel from their production sites to Earth unaffected by magnetic deflection.

Current gamma-ray instruments like the *Fermi*-LAT in space, the ground-based Cherenkov telescopes MAGIC, VERITAS and H.E.S.S., and the new-generation water Cherenkov detector HAWC, as well as neutrino telescopes like IceCube and Antares, are sensitive to overlapping and complementary DM particle mass ranges (from ~ 1 GeV to ~ 100 TeV). All of these instruments have dedicated programs to look for DM signals coming from, e.g., the Galactic center and halo [1, 2, 3, 4, 5, 6, 7], galaxy clusters [8, 9, 10, 11, 12], or dwarf spheroidal satellite galaxies (dSphs) of the Milky Way (MW) [13, 14, 15, 16].

The universality of DM properties allows the combination of data from different experiments and/or observational targets into a global, sensitivity-optimized search [17]. For a given DM particle model, a joint likelihood function can be written as the product of the partial contributions from each of the measurements/instruments. The advantage of such an approach is that the details of each experiment do not need to be combined or averaged. We have implemented this analysis framework, applicable to observations from gamma-ray and neutrino instruments, and applied it to the MAGIC and *Fermi*-LAT observations of dSphs.

The MW dSphs are associated to the Galactic DM sub-haloes, predicted by N-body cosmological simulations, that have attracted enough baryonic mass to start stellar activity (other sub-halos may remain completely dark). MW dSphs have very high mass-to-light ratios, being the most DM-dominated systems known so far [18]. MW dSphs also have the advantage of being free of astrophysical gamma-ray sources and, while they are relatively close, they still appear as quasi-point-like sources for gamma-ray and neutrino telescopes, with relatively high expected fluxes. In addition, the possibility of determining the DM distribution and its uncertainty using a common methodology [19] allows a straightforward combination of their observations into a sensitivity-optimized global analysis.

In this paper, we present our new global analysis framework and the results of applying it to MAGIC and *Fermi*-LAT observations of dSphs.

2. MAGIC and *Fermi*-LAT data samples

The *Florian Goebel* MAGIC telescopes are located at the Roque de los Muchachos Observatory (28.8° N, 17.9° W; 2200 m above sea level), at the Canary Island of La Palma (Spain). MAGIC is a system of two telescopes that detect Cherenkov light produced by the atmospheric showers initiated by cosmic particles entering the Earth atmosphere. Cherenkov images of the showers are projected by MAGIC reflectors onto the photo-multiplier tube (PMT) cameras, and are used to reconstruct the calorimetric and spatial properties of the primary particle, as well as for its identification. Thanks to its large reflectors (17 meter diameter), plus its high-quantum-efficiency and

low-noise PMTs, MAGIC achieves high sensitivity to Cherenkov light, hence low energy threshold. The MAGIC telescopes are able to detect cosmic gamma rays in the very-high-energy domain, i.e. in the range between ~ 50 GeV and ~ 50 TeV.

For our study, we use MAGIC data corresponding to 158 hours of observations of Segue 1 [13], the deepest observations of any dSph by any Cherenkov telescope. The data were taken between 2011 and 2013 [20].

The *Fermi*-LAT is a pair-conversion telescope sensitive to gamma rays in the range from 20 MeV to more than 300 GeV [21]. With its large field of view (2.4 sr), the *Fermi*-LAT is able to efficiently survey the entire sky. Indeed, since its launch in August 2008, the *Fermi*-LAT has primarily operated in a survey mode that scans the entire sky every 3 hours. The survey-mode exposure coverage is fairly uniform over the sky with variations of at most 30% with respect to the average exposure. The *Fermi*-LAT source sensitivity, which is limited by the intensity of diffuse backgrounds, shows larger variations but is relatively constant at high galactic latitudes ($b > 10^\circ$).

In this work, we use a *Fermi*-LAT data sample corresponding to 6 years of observations of 15 dSphs, processed with the latest (Pass 8) data analysis [16]. Events are selected with energies between 500 MeV and 500 GeV in a $10^\circ \times 10^\circ$ region of interest (ROI) centered on each dSph. LAT likelihoods for a given DM model are constructed from the bin-by-bin likelihoods of [16] and do not involve any reanalysis of the LAT photon data.

3. Analysis

3.1 Dark Matter annihilation flux

The gamma-ray (or neutrino) flux produced by DM annihilation in a given target and detectable at Earth by an instrument observing a field of view $\Delta\Omega$ is given by:

$$\frac{d\Phi}{dE}(\Delta\Omega) = \frac{1}{4\pi} \frac{\langle\sigma v\rangle J(\Delta\Omega)}{2m_{\text{DM}}^2} \frac{dN}{dE}, \quad (3.1)$$

where m_{DM} is the mass of the DM particle, $\langle\sigma v\rangle$ the thermally-averaged annihilation cross section, dN/dE the average gamma-ray spectrum per annihilation reaction (for neutrino this term includes the oscillation probability between target and Earth), and

$$J(\Delta\Omega) = \int_{\Delta\Omega} d\Omega \int_{\text{l.o.s.}} dl \rho^2(l, \Omega) \quad (3.2)$$

is the so-called *astrophysical factor* (or simply J-factor), with ρ being the DM density, and the integrals running over $\Delta\Omega$ and the line of sight (l.o.s.), respectively.

Using PYTHIA simulation package version 8.205 [22], we have computed the average gamma-ray spectra per annihilation process (dN/dE) for a set of DM particles of masses between 10 GeV and 100 TeV, annihilating into SM pairs $b\bar{b}$ and $\tau^+\tau^-$. For each channel and mass, we average the gamma-ray spectrum resulting from 10^7 decay events of a generic resonance with mass $2 \times m_{\text{DM}}$ into the specified pairs. For each simulated event, we trace all the decay chains, including the muon radiative decay ($\mu^- \rightarrow e^- \bar{\nu}_e \nu_\mu \gamma$, not active in PYTHIA by default), down to stable particles.

For the computation of the J-factors we follow the approach by Martinez [19]. The distribution of DM in the halos of the different dSphs are parameterized following a Navarro-Frenk-White

profile (NFW) [23]:

$$\rho(r) = \frac{\rho_0 r_s^3}{r(r_s + r)^2} \quad , \quad (3.3)$$

where r_s and ρ_0 are the NFW scale radius and characteristic density, respectively, and are determined from a fit to the dSph stellar density and velocity dispersion profiles. The properties of the dSphs used in our analysis, including the J-factors and their uncertainties, can be found in [16].

We use templates for the DM emission in each dSph normalized to its J-factor integrated to a radius of 0.5° from the halo center ($J_{\text{obs},i}$). The 0.5° integration region encompasses more than 90% of the annihilation flux for our dSph halo models which have halo scale radii between 0.1° and 0.4° . In the LAT analysis the intensity templates are used to construct a three-dimensional model for the expected DM signal as a function of space and energy within the $10^\circ \times 10^\circ$ ROI centered on each dSph. The MAGIC analysis uses a one-dimensional likelihood for the photon energy distribution within a signal aperture of radius 0.122° . The observable flux in the MAGIC analysis of Segue 1 is therefore reduced by a factor of ~ 1.6 with respect to the LAT analysis of the same target. However we note that because the signal aperture is matched to the angular size of the MAGIC PSF, this truncation has a negligible impact on the sensitivity of the analysis.

3.2 Likelihood analysis

For each considered annihilation channel and DM particle mass, we compute the profile likelihood ratio as a function of $\langle\sigma v\rangle$:

$$\lambda_P(\langle\sigma v\rangle | \mathcal{D}) = \frac{\mathcal{L}(\langle\sigma v\rangle; \hat{\mathbf{v}} | \mathcal{D})}{\mathcal{L}(\langle\hat{\sigma v}\rangle; \hat{\mathbf{v}} | \mathcal{D})} \quad , \quad (3.4)$$

with \mathcal{D} representing the data samples and \mathbf{v} the nuisance parameters. $\langle\hat{\sigma v}\rangle$ and $\hat{\mathbf{v}}$ are the values maximizing the joint likelihood function (\mathcal{L}), and $\hat{\mathbf{v}}$ the value that maximizes \mathcal{L} for a given value of $\langle\sigma v\rangle$. The likelihood function can be written as:

$$\mathcal{L}(\langle\sigma v\rangle; \mathbf{v} | \mathcal{D}) = \prod_{i=1}^{N_{\text{target}}} \mathcal{L}_i(\langle\sigma v\rangle; J_i, \boldsymbol{\mu}_i | \mathcal{D}_i) \cdot \mathcal{J}(J_i | J_{\text{obs},i}, \sigma_i) \quad , \quad (3.5)$$

with the index i running over the different targets (dSphs in our case); J_i is the J-factor for the corresponding target (see Equation 3.2); $\boldsymbol{\mu}_i$ denotes any additional nuisance parameters; and \mathcal{D}_i the target-related input data. \mathcal{J} is the likelihood for J_i , given measured $\log_{10}(J_{\text{obs},i})$ and its uncertainty σ_i [16], i.e.:

$$\mathcal{J}(J_i | J_{\text{obs},i}, \sigma_i) = \frac{1}{\ln(10) J_{\text{obs},i} \sqrt{2\pi} \sigma_i} \times e^{-\left(\log_{10}(J_i) - \log_{10}(J_{\text{obs},i})\right)^2 / 2\sigma_i^2} \quad . \quad (3.6)$$

The likelihood function for a particular target (\mathcal{L}_i) can in turn be written as the product of the likelihoods for different instruments (represented by the index j), i.e.:

$$\mathcal{L}_i(\langle\sigma v\rangle; J_i, \boldsymbol{\mu}_i | \mathcal{D}_i) = \prod_{j=1}^{N_{\text{instrument}}} \mathcal{L}_{ij}(\langle\sigma v\rangle; J_i, \boldsymbol{\mu}_{ij} | \mathcal{D}_{ij}) \quad , \quad (3.7)$$

where $\boldsymbol{\mu}_{ij}$ and \mathcal{D}_{ij} represent the nuisance parameters and input data sample for the given target i and instrument j .

Equations 3.4, 3.5 and 3.7 are generic, i.e. they are valid for any set of instruments and observed targets. In addition, they allow merging of the results from different instruments and targets, starting from tabulated values of \mathcal{L}_{ij} vs. $\langle\sigma v\rangle$ for a fixed value of J_i and profiled with respect to μ_{ij} . These values can be produced and shared by the different experiments without the need of releasing or sharing any of the internal information used to produce them.

For this work, we use the *Fermi*-LAT likelihood values vs. energy flux, tabulated for different targets and in energy bins, and released by the *Fermi*-LAT Collaboration [16]. In the case of MAGIC, the likelihood is obtained following the method described in Refs. [17] and [13].

4. Results

We compute one-sided, 95% confidence level upper limits to $\langle\sigma v\rangle$ by numerically solving the equation $-2\ln\lambda_P(\langle\sigma v\rangle_{2.71}|\mathcal{D}) = 2.71$, for $\langle\sigma v\rangle_{2.71}$. We consider λ_P restricted to non-negative $\langle\sigma v\rangle$ values only.

Figure 1 shows the 95% confidence level limits to $\langle\sigma v\rangle$ for DM particles with masses between 10 GeV to 100 TeV annihilating into SM pairs ($b\bar{b}$ and $\tau^+\tau^-$) obtained from the combination of *Fermi*-LAT (15 dSphs and Segue 1 alone) and MAGIC Segue 1 observations. The 68% and 95% containment bands are computed from the distribution of upper limits obtained from 300 analysis realizations consisting of *Fermi*-LAT observations of empty fields of view combined with MAGIC fast simulations (assuming in both cases equal exposures as for the real data), and J-factors randomly selected according to the probability density function (PDF) in Equation 3.6. The blank fields constituting the LAT realizations were selected by choosing random sky positions with $|b| > 30^\circ$ centered at least 0.5° from a source in the 3FGL catalog. MAGIC fast simulations consist of a set of event energies randomly generated from the background PDF (see Ref. [13] for details) for both signal and background regions.

We find no positive signal of DM in our data sample. As expected, limits in the low and high ends of the considered mass range are dominated by *Fermi*-LAT and MAGIC observations, respectively, where the combined limits coincide with the individual ones. The combination provides a significant improvement in the range between ~ 1 and ~ 30 TeV (for $b\bar{b}$) or ~ 0.2 and ~ 2 TeV (for $\tau^+\tau^-$), with a maximum improvement of the combined limits with respect to the individual ones by a factor ~ 2 at a mass of 500 GeV (for $b\bar{b}$) and 3 TeV (for $\tau^+\tau^-$).

MAGIC individual results shown here may differ from those presented in Ref. [13] by up to a factor ~ 4 , which needs a dedicated explanation. First, we note that the data, instrument response functions, and likelihood functions are identical in both works. Aside from enlarging the explored DM mass range, and in order to homogenize MAGIC and *Fermi*-LAT analyses, we have introduced the following differences between the two works: *i*) the J-factor for MAGIC cut of $J(0.122^\circ) = 2.2 \times 10^{19} \text{ GeV}^2 \text{ cm}^{-5}$ (following Ref. [19] and assuming an NFW DM density profile); *ii*) include the statistical uncertainties in the determination of the J-factor; *iii*) use the *Fermi*-LAT prescription for limits close to bounds of the physical region ($\langle\sigma v\rangle \geq 0$) (here we restrict the function $-2\ln\lambda_P(\langle\sigma v\rangle|\mathcal{D})$ to $\langle\sigma v\rangle \geq 0$, whereas in previous MAGIC results λ_P was also computed for negative $\langle\sigma v\rangle$ values, and the quoted limit was $\langle\sigma v\rangle_{\text{svt}} = \langle\sigma v\rangle_{2.71} - \langle\widehat{\sigma v}\rangle$, whenever $\langle\widehat{\sigma v}\rangle < 0$, which is a more conservative choice).

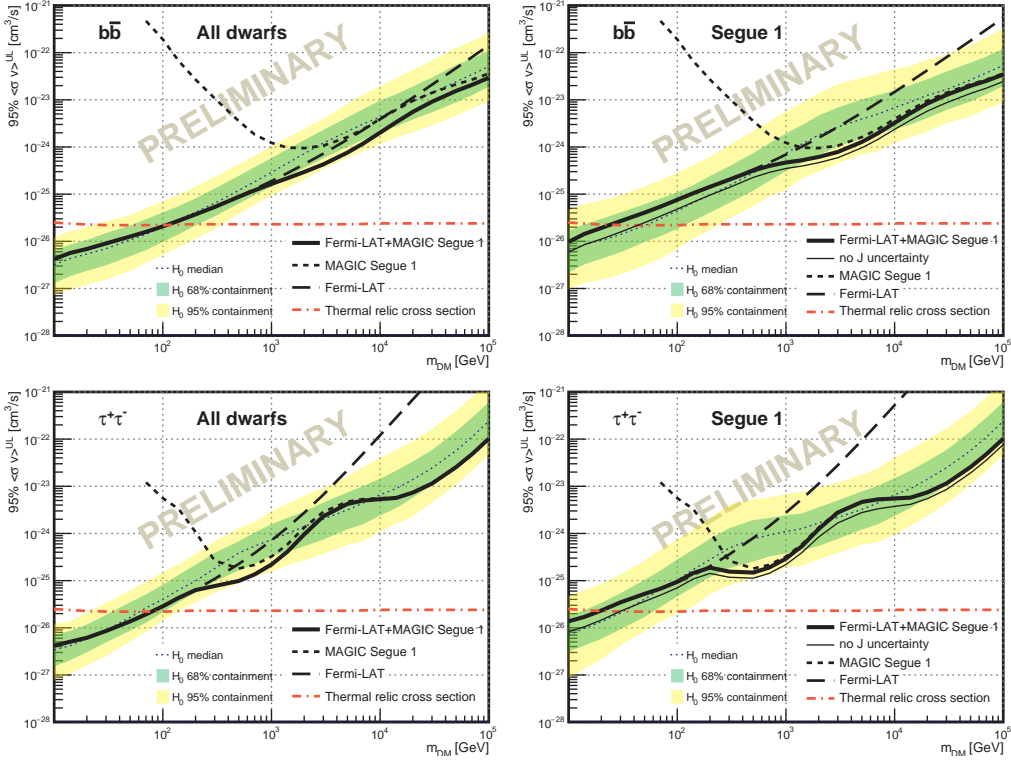


Figure 1: 95% CL upper limits on the thermally-averaged cross section for DM particles annihilating into $b\bar{b}$ (upper plots) and $\tau^+\tau^-$ (lower plots). Thick solid lines show the combined limits obtained by merging the *Fermi*-LAT observations of 15 dSphs (left plots) or Segue 1 (right plots) with MAGIC observations of Segue 1. Dashed lines show the individual MAGIC (short dashes) and *Fermi*-LAT (long dashes) limits. J-factor statistical uncertainties are included. For the Segue 1 results, we also show (thin-solid line) the combined limits assuming a fixed J-factor (no statistical uncertainties). The thin-dotted line, green and yellow bands show, respectively, the median and the symmetrical, two-sided 68% and 95% containment bands for the distribution of limits under the null ($H_0 : \langle\sigma v\rangle=0$) hypothesis (see main text for more details). The red-dashed-dotted line shows the thermal relic cross section from [24].

5. Discussion and Conclusions

This work presents, for the first time, limits to the DM annihilation cross-section from a comprehensive analysis of gamma-ray data of energies between 500 MeV and 10 TeV. Using a common, homogeneous analysis approach (both in the applied statistical methods and in the determination of the J-factors), we have combined the MAGIC observations of Segue 1 with *Fermi*-LAT observations of 15 dSphs. This allowed the computation of meaningful global DM limits, and the direct comparison of the individual results obtained with different instruments. Our results span the DM particle mass range from 10 GeV to 100 TeV – the widest range covered by a single analysis to date.

We have not observed any DM signal. Consequently, we set limits on the DM annihilation cross-section. Our results are the most constraining from observations of dSphs in the considered

mass range. For the low-mass range, our results (fully dominated by *Fermi*-LAT data) are below the thermal relic cross-section $\langle\sigma v\rangle \simeq 3 \times 10^{-26} \text{ cm}^3 \text{ s}^{-1}$. In the intermediate mass range (from few hundred GeV to few tens TeV, depending on the considered annihilation channel), where *Fermi*-LAT and MAGIC achieve similar sensitivities, the improvement of the combined result with respect to the individual ones reaches a factor ~ 2 . In addition, we present, for the first time, limits to high DM particle mass above 10 TeV (fully dominated by MAGIC).

Our global analysis method is completely generic, and can be easily extended to include data from more targets, instruments and/or messenger particles provided they have similar sensitivity to the considered DM particle mass range. Of particular interest is the case of a global DM search from dSphs including data from all current gamma-ray (*Fermi*-LAT, MAGIC, VERITAS, H.E.S.S., HAWC) and neutrino (IceCube, Antares) instruments, and we hereby propose a coordinated effort toward that end. Including results obtained from other types of observational targets like the Galactic Center, galaxy clusters or others is formally also possible, but a common approach to the J-factor determination remains an open question. In the future, this analysis could include new instruments like CTA, Gamma-400 or Km3Net. Our global approach offers the best chances for indirect DM discovery, or for setting the most stringent limits attainable by these kinds of observations, therefore placing a new landmark in the field.

Acknowledgments

The MAGIC Collaboration thanks the Instituto de Astrofísica de Canarias for the excellent working conditions at the Observatorio del Roque de los Muchachos in La Palma. We also acknowledge the financial support of the ERDF under the Spanish MINECO (FPA2012-39502), of the CPAN CSD2007-00042 and MultiDark CSD2009-00064 projects of the Spanish Consolider-Ingenio 2010 program and of Centro de Excelencia Severo Ochoa SEV-2012-0234.

The *Fermi*-LAT Collaboration acknowledges support for LAT development, operation and data analysis from NASA and DOE (United States), CEA/Irfu and IN2P3/CNRS (France), ASI and INFN (Italy), MEXT, KEK, and JAXA (Japan), and the K.A. Wallenberg Foundation, the Swedish Research Council and the National Space Board (Sweden). Science analysis support in the operations phase from INAF (Italy) and CNES (France) is also gratefully acknowledged.

References

- [1] A. Abramowski et al., *Search for a Dark Matter annihilation signal from the Galactic Center halo with H.E.S.S.* . Phys. Rev. Lett. **106** (2011) 161301. [arXiv:1103.3266]
- [2] J. Albert et al., *Observation of Gamma Rays from the Galactic Center with the MAGIC telescope*, Astrophys. J. **638** (2006) L101. [arXiv:astro-ph/0512469]
- [3] A. Archer et al., *Very-High Energy Observations of the Galactic Center Region by VERITAS in 2010-2012*, Astrophys. J. **790** (2014) 149. [arXiv:1406.6383]
- [4] M. Ackermann et al. *Constraints on the Galactic Halo Dark Matter from Fermi-LAT Diffuse Measurements*, Astrophys. J. **761** (2012) 91. [arXiv:1205.6474]
- [5] A. U. Abeysekara et al., *The Sensitivity of HAWC to High-Mass Dark Matter Annihilations*, Phys. Rev. **D90** (2014) 122002. [arXiv:1405.1730]

- [6] R. Abbasi et al., *Search for Dark Matter from the Galactic Halo with the IceCube Neutrino Telescope*, Phys. Rev. **D84** (2011) 022004. [arXiv:1101.3349]
- [7] S. Adrián-Martínez, *Search of Dark Matter Annihilation in the Galactic Centre using the ANTARES Neutrino Telescope*. [arXiv:1505.04866]
- [8] J. Aleksić et al., *MAGIC Gamma-Ray Observation of the Perseus Galaxy Cluster*, Astrophys. J. **710** (2010) 634. [arXiv:0909.3267]
- [9] A. Abramowski et al., *Search for Dark Matter Annihilation Signals from the Fornax Galaxy Cluster with H.E.S.S.*, Astrophys. J. **750** (2012) 123. [arXiv:1202.5494]
Erratum: *ibid* **783** (2014) 63
- [10] T. Arlen et al., *Constraints on Cosmic Rays, Magnetic Fields, and Dark Matter from Gamma-Ray Observations of the Coma Cluster of Galaxies with VERITAS and Fermi*, Astrophys. J. **757** (2012) 123. [arXiv:1208.0676]
- [11] M. Ackermann et al., *Constraints on Dark Matter Annihilation in Clusters of Galaxies with the Fermi Large Area Telescope*, JCAP **05** (2010) 025. [arXiv:1002.2239]
- [12] M. G. Aartsen et al., *An IceCube Search for Dark Matter Annihilation in Nearby Galaxies and Galaxy Clusters*, Phys. Rev. **D88** (2013) 122001. [arXiv:1307.3473]
- [13] J. Aleksić et al., *Optimized dark matter searches in deep observations of Segue 1 with MAGIC*, JCAP **02** (2014) 008. [arXiv:1312.1535]
- [14] E. Aliu et al., *Erratum: VERITAS deep observations of the dwarf spheroidal galaxy Segue 1 [Phys. Rev. D 85, 062001 (2012)]*. Phys. Rev. **D91** (2015) 129903(E)
- [15] A. Abramowski et al., *Search for dark matter annihilation signatures in H.E.S.S. observations of Dwarf Spheroidal Galaxies*, Phys. Rev. D in press (2015). [arXiv:1410.2589]
- [16] M. Ackermann et al., *Searching for Dark Matter Annihilation from Milky Way Dwarf Spheroidal Galaxies with Six Years of Fermi-LAT Data*. [arXiv:1503.02641]
- [17] J. Aleksić, J. Rico and M. Martinez, *Optimized analysis method for indirect dark matter searches with Imaging Air Cherenkov Telescopes*, JCAP **10** (2012) 032. [arXiv:1209.5589]
- [18] L. E. Strigari, *Galactic searches for dark matter*, Phys. Rep. **531** (2013) 1. [arXiv:1211.7090].
- [19] G. D. Martinez, *A Robust Determination of Milky Way Satellite Properties using Hierarchical Mass Modeling*. [arXiv:1309.2641]
- [20] J. Aleksić et al., *The major upgrade of the MAGIC telescopes, Part II: The achieved physics performance using the Crab Nebula observations*, Astropart. Phys. in press (2015). [arXiv:1409.5594]
- [21] W. B. Atwood et al., *The Large Area Telescope on the Fermi Gamma-ray Space Telescope Mission*, Astrophys. J. **697** (2009) 1071.. [arXiv:0902.1089]
- [22] T. Sjöstrand et al., *An Introduction to PYTHIA 8.2*, Comput. Phys. Commun. **191** (2015) 159. [arXiv:1410.3012]
- [23] J. F. Navarro, C. S. Frenk, and S. D. White, *A Universal Density Profile from Hierarchical Clustering*, Astrophys. J. **490** (1997) 493. [arXiv:astro-ph/9611107]
- [24] G. Steigman, B. Dasgupta and J. F. Beacom, *Precise relic WIMP abundance and its impact on searches for dark matter annihilation* Phys. Rev. **D86** (2012) 023506