

Search for squarks and gluinos with the ATLAS detector in final states with jets and missing transverse momentum in Run2

Yuta Sano*

Nagoya University

E-mail: yuta@hepl.phys.nagoya-u.ac.jp

Despite the absence of experimental evidence, weak scale supersymmetry remains one of the best motivated and studied Standard Model extensions. The recent increase in the center of mass energy of the proton-proton collisions at $\sqrt{s} = 13\text{TeV}$ gives a unique opportunity to extend the sensitivity to production of supersymmetric particles at the Large Hadron Collider. This paper summarises the latest ATLAS result on inclusive searches for promptly decaying supersymmetric squarks and gluinos in events containing jets, missing transverse momentum and no light lepton using data of 13.3 fb^{-1} .

*The 3rd International Symposium on Quest for the Origin of Particles and the Universe
5-7 January 2017
Nagoya University, Japan*

*Speaker.

1. Introduction

Supersymmetry (SUSY) is a generalization of space-time symmetries that predicts new bosonic partners for the fermions and new fermionic partners for the bosons of the Standard Model (SM). If the R-parity is conserved [1], squarks (including anti-squarks) and gluinos can be produced in pairs and the lightest supersymmetric particle is stable and represents a possible dark-matter candidate. Squarks and gluinos are one of the primary targets in early searches in Run2 because the large expected cross-sections are predicted for the strong production of these sparticles and the recent increase in the center of mass energy of the proton-proton collisions gives a unique opportunity to extend the sensitivity to the production at the Large Hadron Collider. The production cross section of 1.5 TeV gluinos for $\sqrt{s} = 13$ TeV is 50 times larger than that for $\sqrt{s} = 8$ TeV. Squarks and gluinos can decay through $\tilde{q} \rightarrow q\tilde{\chi}_1^0$ and $\tilde{g} \rightarrow q\bar{q}\tilde{\chi}_1^0$ to the lightest neutralino (Figure 1(a) and 1(b)). Additional decay modes can include the production of charginos via $\tilde{g} \rightarrow q\bar{q}\tilde{\chi}_1^\pm$ and subsequent chargino decay is $W^\pm\tilde{\chi}_1^0$ (Figure 1(c)). This paper describes the result of a search for squarks and gluinos in final states containing only hadronic jets and large missing transverse momentum. The data used in this search [2] was recorded in 2015 and 2016 by the ATLAS experiment in $\sqrt{s} = 13$ TeV proton-proton collisions at the LHC, corresponding to an integrated luminosity of 13.3 fb^{-1} .

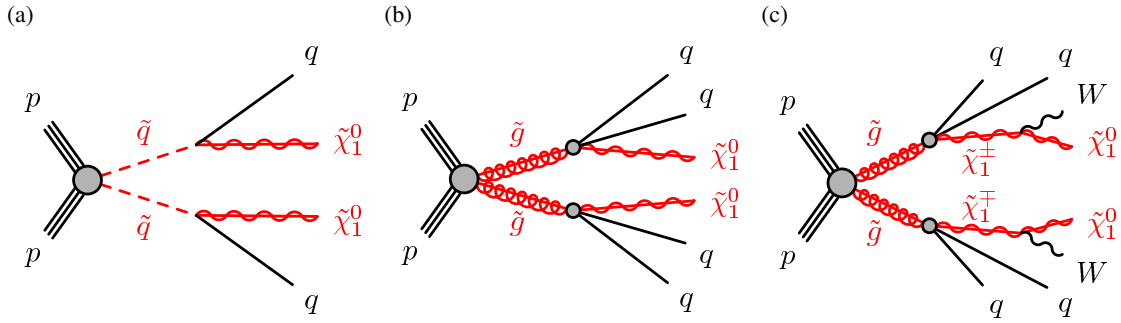


Figure 1: The decay topologies of (a) squark-pair production and (b, c) gluino-pair production, in the simplified models with (a) direct decays of squarks and (b) direct or (c) one-step decays of gluinos.

2. Analysis strategy

Signal Regions (SRs) to enhance each targeted signal are defined as Figure 1. The requirements on the number of jets of ‘ ≥ 2 or 3’, ‘ ≥ 4 or 5’ and ‘ ≥ 6 ’ target the signals in Figure 1(a), (b) and (c), respectively. The signal selection uses requirements on the $m_{\text{eff}}(\text{incl.})$ which is defined to be the scalar sum of the transverse momenta p_T of the jets with more than 50 GeV and missing transverse energy E_T^{miss} with more than 250 GeV. The $m_{\text{eff}}(\text{incl.})$ is related to the mass of the primary SUSY particle produced.

To reduce the background from multi-jet processes, requirements on $E_T^{\text{miss}}/m_{\text{eff}}$ (or $E_T^{\text{miss}}/\sqrt{H_T}$, where H_T is defined as the scalar sum of the transverse momenta of all jets) and $\Delta\phi(\text{jet}, E_T^{\text{miss}})$ which is defined to be the smallest azimuthal separation between E_T^{miss} and the momenta of any of the reconstructed jet with $p_T > 50$ GeV are designed. In the regions with at least four jets in

the final state, additional suppression of background processes is based on the aplanarity variable which is defined as $A = 3/2\lambda_3$, where λ_3 is the smallest eigenvalue of the normalized momentum tensor of the jets to distinguish spherical events from planar or linear events [3].

The SM background processes contribute to the event counts in the SRs. The dominant sources in this search are Z+jets, W+jets, top quark pairs, single top quarks, dibosons and multi-jet production. W+jets, ttbar, Z+jets and multi-jet production are fitted simultaneously to data in specific control regions defined for each of the SRs. Dibosons production is estimated entirely using MC simulation.

Targeted signal	$\tilde{q}\tilde{q}, \tilde{q} \rightarrow q\tilde{\chi}_1^0$				
Requirement	Signal Region				
	Meff-2j-800	Meff-2j-1200	Meff-2j-1600	Meff-2j-2000	Meff-3j-1200
E_T^{miss} [GeV] >	250				
$p_T(j_1)$ [GeV] >	200		250		600
$p_T(j_2)$ [GeV] >	200		250		50
$p_T(j_3)$ [GeV] >			–		50
$ \eta(j_{1,2}) <$	0.8		1.2		–
$\Delta\phi(\text{jet}_{1,2,(3)}, \mathbf{E}_T^{\text{miss}})_{\text{min}} >$	0.8				0.4
$\Delta\phi(\text{jet}_{i>3}, \mathbf{E}_T^{\text{miss}})_{\text{min}} >$	0.4				0.2
$E_T^{\text{miss}}/\sqrt{H_T}$ [GeV ^{1/2}] >	14	16	18	20	16
$m_{\text{eff}}(\text{incl.})$ [GeV] >	800	1200	1600	2000	1200

Targeted signal	$\tilde{g}\tilde{g}, \tilde{g} \rightarrow q\tilde{q}\tilde{\chi}_1^0$					
Requirement	Signal Region					
	Meff-4j-1000	Meff-4j-1400	Meff-4j-1800	Meff-4j-2200	Meff-4j-2600	Meff-5j-1400
E_T^{miss} [GeV] >	250					
$p_T(j_1)$ [GeV] >			200			500
$p_T(j_4)$ [GeV] >		100		150		50
$p_T(j_5)$ [GeV] >			–			50
$ \eta(j_{1,2,3,4}) <$	1.2		2.0			–
$\Delta\phi(\text{jet}_{1,2,(3)}, \mathbf{E}_T^{\text{miss}})_{\text{min}} >$	0.4					
$\Delta\phi(\text{jet}_{i>3}, \mathbf{E}_T^{\text{miss}})_{\text{min}} >$	0.4					0.2
Aplanarity >	0.04					–
$E_T^{\text{miss}}/m_{\text{eff}}(N_j) >$	0.25		0.2			0.3
$m_{\text{eff}}(\text{incl.})$ [GeV] >	1000	1400	1800	2200	2600	1400

Targeted signal	$\tilde{g}\tilde{g}, \tilde{g} \rightarrow q\tilde{q}W\tilde{\chi}_1^0$	
Requirement	Signal Region	
	Meff-6j-1800	Meff-6j-2200
E_T^{miss} [GeV] >	250	
$p_T(j_1)$ [GeV] >	200	
$p_T(j_6)$ [GeV] >	50	100
$ \eta(j_{1,\dots,6}) <$	2.0	–
$\Delta\phi(\text{jet}_{1,2,(3)}, \mathbf{E}_T^{\text{miss}})_{\text{min}} >$	0.4	
$\Delta\phi(\text{jet}_{i>3}, \mathbf{E}_T^{\text{miss}})_{\text{min}} >$	0.2	
Aplanarity >	0.08	
$E_T^{\text{miss}}/m_{\text{eff}}(N_j) >$	0.2	0.15
$m_{\text{eff}}(\text{incl.})$ [GeV] >	1800	2200

Table 1: Selection criteria and targeted signal model used to define signal regions.

3. Results

Observed m_{eff} distributions for the SR of the Meff-4j-2200 (the number of jets ≥ 4 and $m_{\text{eff}}(\text{incl.}) \geq 2200$) and the number of events observed in the data and the number of SM events expected to enter each of the signal regions, determined using the background-only fit are shown in Figure 2(a) and 2(b). No excess above the SM background expectation was observed in any of the SRs.

In Figure 3(a) and 3(b), limits are shown for two classes of simplified models in which only direct production of light-flavour squark and gluino pairs, corresponding to Figure 1(a) and 1(b) respectively, are considered. In Figure 3(c), limit is shown for pair-produced gluinos each decaying via an intermediate $\tilde{\chi}_1^\pm$ to two quarks, a W boson and a $\tilde{\chi}_1^0$. Squark masses below 1.35 TeV and gluino masses below 1.86 TeV are excluded at the 95% confidence level.

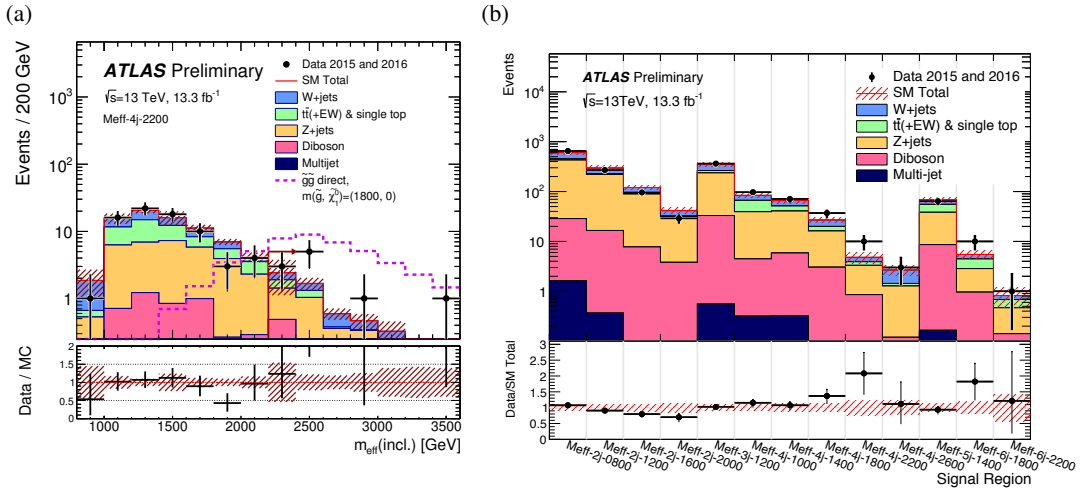


Figure 2: (a) Observed m_{eff} distributions for the Meff-4j-2200. (b) Comparison of the observed and expected event yields as a function of signal region.

4. Summary

The large expected cross-sections are predicted for the strong production of these particles and the recent increase in the center of mass energy of the proton-proton collisions gives a unique opportunity to extend the sensitivity to the production at the Large Hadron Collider. Squarks and gluinos in final states containing only hadronic jets and large missing transverse momentum are targeted in this analysis. SRs to enhance each targeted signal are defined. No excess above the SM background expectation was observed. Squark masses below 1.35 TeV and gluino masses below 1.86 TeV are excluded at the 95% confidence level.

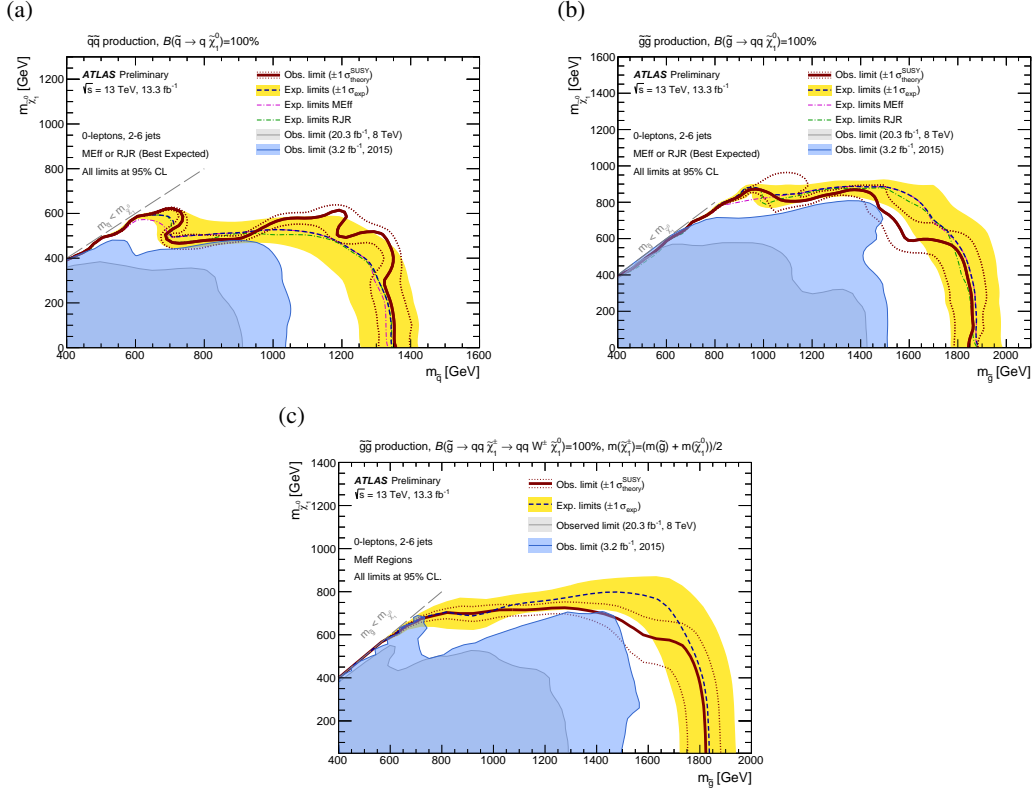


Figure 3: Exclusion limits for direct production of (a) light-flavour squark pairs with decoupled gluinos, (b) gluino pairs with decoupled squark, and (c) pair-produced gluinos each decaying via an intermediate $\tilde{\chi}_1^\pm$ to two quarks, a W boson and a $\tilde{\chi}_1^0$ for models with a fixed $m(\tilde{\chi}_1^\pm) = (m(\tilde{g}) + m(\tilde{\chi}_1^0))/2$ and varying values of $m(\tilde{g})$ and $m(\tilde{\chi}_1^0)$.

References

- [1] G. R. Farrar and P. Fayet, Phenomenology of the Production, Decay, and Detection of New Hadronic States Associated with Supersymmetry, Phys. Lett. B 76 (1978) 575.
- [2] The ATLAS Collaboration, Further searches for squarks and gluinos in final states with jets and missing transverse momentum at $\sqrt{s} = 13$ TeV with the ATLAS detector, ATLAS-CONF-2016-078
- [3] C. Chen, New approach to identifying boosted hadronically decaying particles using jet substructure in its center-of-mass frame, Phys. Rev. D 85 (2012) 034007, arXiv: 1112.2567 [hep-ph].