

Multi-Messenger observations of the γ -ray blazar 4FGL J0658.6+0636 consistent with an IceCube high-energy neutrino

Raniere de Menezes,^{a,*} Sara Buson^b and collaborators on behalf of the Fermi-LAT, H.E.S.S., MAGIC, VERITAS, ZTF, and TELAMON Collaboration
(a complete list of authors can be found at the end of the proceedings)

^aUniversidade de São Paulo, Departamento de Astronomia, Rua do Matão, 1226, São Paulo, SP 05508-090, Brazil

^bInstitut für Theoretische Physik and Astrophysik, Universität Würzburg, D-97074 Würzburg, Germany
E-mail: raniere.m.menezes@gmail.com

The detection of cosmic neutrinos has raised many new questions in astroparticle physics, among the most compelling of which is the identification of cosmic neutrino emitters. After more than a decade of IceCube operations, the most promising neutrino astrophysical association remains the very-high-energy (VHE, > 100 GeV) blazar TXS 0506+056. Recently, on November 14, 2020 the IceCube observatory reported the detection of a well-reconstructed high-energy neutrino event, IceCube-201114A, with a high probability of being astrophysical. Within the 90% IceCube-201114A localization region only one known γ -ray (> 100 MeV) source is found. This is 4FGL J0658.6+0636, associated with the blazar NVSS J065844+063711. In these proceedings we present results from the rich multi-messenger campaign triggered by the IceCube-201114A neutrino detection, which has allowed us to collect simultaneous and quasi-simultaneous data for the γ -ray source potentially associated with the neutrino. NVSS J065844+063711 is a previously-known blazar with broadband properties resembling a high-synchrotron-peaked object, making it a promising TeV emitter. Indeed, the detection of very high-energy (VHE) photons (i.e., > 100 GeV) by the *Fermi* Large Area Telescope provides the first evidence of such emission from this object. It makes NVSS J065844+063711 the second VHE object found within the 90% confidence region of a well-reconstructed, high-energy IceCube event.

37th International Cosmic Ray Conference (ICRC 2021)
July 12th – 23rd, 2021
Online – Berlin, Germany

*Presenter

1. Introduction

The detection of a diffuse background of astrophysical neutrinos with the IceCube Neutrino Observatory in 2013 opened a new window to the sky [1, 2]. Neutrinos are unambiguous tracers of cosmic-ray acceleration sites, as they are able to escape unimpeded from dense astrophysical environments generally opaque to other particles [3]. The interactions of relativistic protons and heavier nuclei with the gas and background light near these sites can produce unstable particles, like pions and kaons, which quickly decay into secondary particles, including neutrinos [2].

In 2017, an IceCube neutrino (IceCube-170922A) of high probability of being astrophysical was detected in both spatial and temporal coincidence with the γ -ray flaring blazar TXS 0506+056 [4], providing the first direct evidence of cosmic-ray acceleration in blazars' jets. This discovery prompted a search in the archival IceCube data revealing an excess of low-energy neutrinos with respect to the atmospheric background positionally consistent with IceCube-170922A. The low-energy neutrino excess was observed 2 \sim 3 years before the detection of IceCube-170922A and is likely associated with the γ -ray blazar, i.e., with a significance of $\sim 3.5\sigma$ [5]. However, during the epoch of the neutrino excess, the blazar displayed an electromagnetic emission compatible with a low activity state in radio, optical and even the GeV energy band [6, 7]. The putative detection of neutrino emission suggests the presence of hadronic γ -ray emission from blazars, which can be generated by synchrotron radiation of relativistic protons [8] or photo-hadronic interactions with the ambient photon field [9]. The spectral energy distribution (SED) of TXS 0506+056 is fairly well described by leptonic models, suggesting that if hadronic processes are at work, their contribution to the overall observed emission is not dominant [10, 11].

On November 14, 2020, the IceCube observatory reported the detection of another well-reconstructed high-energy neutrino, IceCube-201114A, which was found to be spatially consistent with the γ -ray blazar 4FGL J0658.6+0636, associated with the high-synchrotron-peaked object NVSS J065844+063711 [12]. The γ -ray observations performed with the *Fermi* Large Area Telescope (LAT) show no enhanced activity of this blazar during the neutrino arrival time. In this contribution, we present the ensemble of the multimessenger observations of NVSS J065844+063711. We include archival and new observations quasi-simultaneous to the neutrino arrival, spanning several energy bands from radio to VHE γ -rays.

2. IceCube-201114A

On November 11, 2020, at 15:05:31.96 UTC, the IceCube observatory reported the detection of a "gold" neutrino¹, i.e. a high-energy neutrino track event (IceCube-201114A) with a $>50\%$ likelihood to be of astrophysical origin. It had a reconstructed direction of right ascension (RA) = $105.25^{+1.28}_{-1.12}^{\circ}$ and declination (Dec) = $6.05^{+0.95}_{-0.95}^{\circ}$ (90% containment, statistical errors only). Its estimated energy is ~ 214 TeV². No neutrino candidate events were recorded by the ANTARES observatory within the 90% error box of the IceCube event during a \pm one day time-window centered on the IceCube event time [30].

¹https://gcn.gsfc.nasa.gov/doc/IceCube_High_Energy_Neutrino_Track_Alerts.pdf

²Astrophysical signalness = 0.56. More details about this event can be found here: https://gcn.gsfc.nasa.gov/notices_amon_g_b/134698_40735501.amon

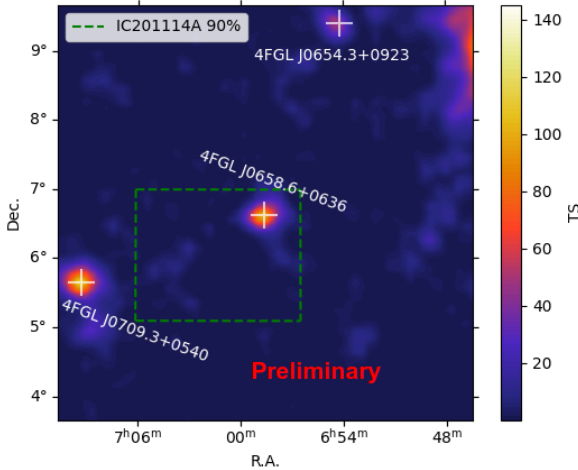


Figure 1: *Fermi*-LAT TS map centered on 4FGL J0658.6+0636 (a.k.a. NVSS J065844+063711), which is the only γ -ray source within the $\sim 90\%$ containment region of IceCube-201114A, given by the dashed contour. This map is based on γ -ray observations in the energy range 0.1–500 GeV, integrating LAT data from August 2008 to February 2021. Only the extended sources and diffuse background are modelled, hence the point-sources in the region are highlighted.

At γ -ray energies, the continuous all-sky monitoring by *Fermi*-LAT revealed only one γ -ray source significantly ($> 5\sigma$) detected within the IceCube-201114A error region [12], as shown in Figure 1. According to the *Fermi*-LAT Fourth Source Catalog [4FGL; 14] this is the γ -ray object 4FGL J0658.6+0636, associated with the blazar NVSS J065844+063711. The well-reconstructed neutrino event prompted several follow-up observations in the very-high-energy (VHE) γ -ray [29], X-ray, optical, and radio bands focused on the candidate neutrino γ -ray counterpart. In §3 we summarize initial results from this multi-messenger campaign, while the full information will be reported in [22].

3. Observations

We collected archival data from the ASI Space Science Data Center (SSDC)³ and performed new observations of NVSS J065844+063711 at γ -ray, X-ray, ultraviolet, optical, and radio wavelengths, quasi-simultaneous with the neutrino arrival time. In the following section we describe the observations at VHE by H.E.S.S., MAGIC and VERITAS and at MeV-GeV energies by *Fermi*-LAT. For a description of the full acquired dataset we refer the reader to [22].

3.1 Very high-energy γ rays

The H.E.S.S. observations presented here were obtained in two epochs to increase the overlap with the MWL campaign. The first observation period took place between the 19th and 26th November 2020, while the second period covered the 10th to 12th December 2020. After data and calibration quality selection a total of 14.5 hours of data are available for analysis. Here we combined the full dataset and reconstruct the arrival direction and energies of the γ -ray events using a log-likelihood optimization comparing the shower images recorded by the four 12-meter telescopes to a semi-analytical model of air showers [23]. A cross-check with an independent calibration and analysis chain, using the Image Pixel-wise fit for the Atmospheric Cherenkov Telescopes *ImPACT* reconstruction method [24], shows consistent results. We define a circular region-of-interest with a radius of 0.12° centered on the optical position of NVSS J065844+063711. The background level in this region was determined using the standard “ring background” technique [25] allowing the background level to be derived from the data itself.

³<https://tools.ssdsc.asi.it/>

MAGIC observed NVSS J065844+063711 from the 16th to the 25th November 2020, for a total exposure of 7.5 hours. After quality cuts, two nights (16th and 20th) were excluded from the data set, resulting in 6.3 hours of available data. The analysis was performed using MARS, the MAGIC Analysis and Reconstruction Software [26]. No signal was detected either for any single night of observation or for the whole stacked data sample. During the computation of upper limits no negative fluctuations were allowed [4].

VERITAS observed NVSS J065844+063711 from the 15th to the 19th November 2020 for a total exposure of approximately 8 hours. After quality cuts, 7 hours of data were available. The analysis was performed using Eventdisplay [27] with the background estimated through the standard “ring background” technique. Cross-check analysis was performed with an independent software package (VEGAS) [28].

Given the lack of detection in any of the observations obtained by the VHE instruments, differential upper limits were computed according to a common configuration using the Rolke method [31], considering a confidence level of 95% and a global 30% systematic uncertainty and assuming a power law spectrum with photon index $\alpha = -2.5$.

3.2 Fermi-LAT

We select *Fermi*-LAT data within a $15^\circ \times 15^\circ$ region-of-interest (ROI) centered on the optical position of NVSS J065844+063711. The period of observations spans 12.5 years, ranging from 4th August 2008 to 10th February 2021. The energy range chosen is 100 MeV – 500 GeV, divided into 8 logarithmically spaced bins per energy decade. The γ -ray data are filtered for good time intervals with `DATA_QUAL > 0` and the recommended instrument configuration for science `LAT_CONFIG == 1`. We use photons belonging to the `SOURCE` class (`evclass = 128`) and split the data set into three energy components: i) 100–300 MeV, ii) 300–1000 MeV, and iii) 1–500 GeV, for which we consider events belonging to different types of point spread function, given by `evtype = 48, 56, and 3`, respectively. To reduce contamination from the Earth limb, we adopt specific maximum zenith angle cuts of 85° , 90° , and 105° for components i), ii) and iii), respectively.

The Galactic and extragalactic background emissions are modeled with the latest interstellar emission model⁴ `gll_iem_v07` and with the isotropic spectral template `iso_P8R3_SOURCE_V2_v1`. We perform the data analysis with `FermiTools`⁵ v1.2.23 and `fermipy`⁶ v0.17.4, by means of a binned likelihood analysis and using MINUIT as the minimizer. In the model of the ROI, we include γ -ray sources listed in 4FGL as well as all sources found with the `fermipy` function `find_sources()` and located up to 12° from the target. Our target is modeled with a single power law.

4. Discussion and conclusions

The blazar NVSS J065844+063711 is the only γ -ray source found within the IceCube neutrino error region. We cross-checked the WISE Blazar-Like Radio-Loud Sources catalog [15] and Roma-BZCat [16] for the presence of blazar-like sources within the neutrino 90% localization region and

⁴<https://fermi.gsfc.nasa.gov/ssc/data/access/lat/BackgroundModels.html>

⁵<https://fermi.gsfc.nasa.gov/ssc/data/analysis/software/>

⁶<https://fermipy.readthedocs.io/en/latest/index.html>

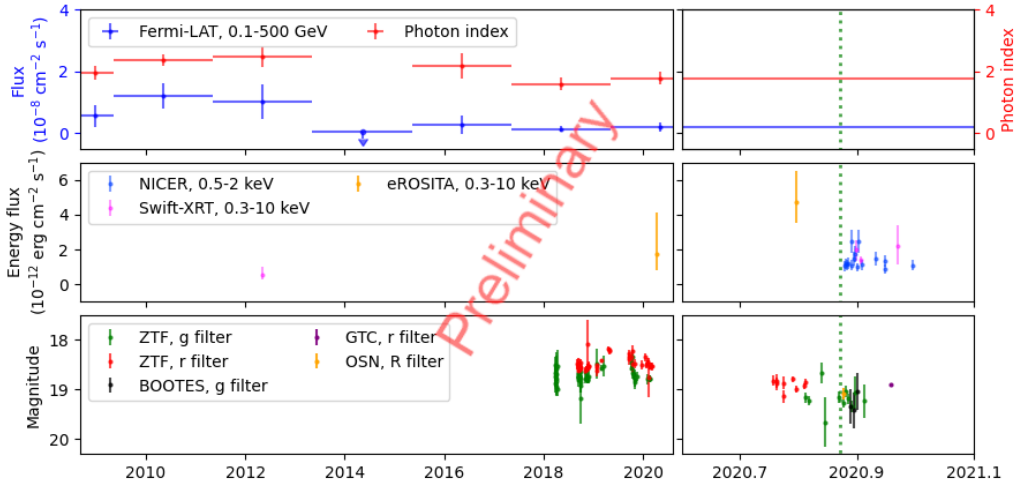


Figure 2: Multiwavelength light curves of NVSS J065844+063711. No flaring activity is observed around the neutrino arrival (green dotted line). The left panels show the observations performed between August 2008 and July 2020, while the right panels show an expanded time scale between July 2020 and February 2021. In the top panels, we show the *Fermi*-LAT fluxes and photon indexes. For the middle panels, we show the X-ray observations performed with NICER, eROSITA and Swift-XRT. In the bottom panels, we show the optical observations collected with ZTF, BOOTES, GTC and OSN. For more details on the data collection and analysis, we refer the reader to [22].

found none beside NVSS J065844+063711. This is a BL Lac object of unknown redshift⁷ at coordinates R.A. = 104.6876° and Dec. = 6.6199° [18]. It lies 0.81° away from the best-fit localization of IceCube-201114A, i.e., well within the 90% neutrino positional uncertainty region.

Gamma-ray emission positionally consistent with this object was first reported in the *Fermi*-LAT First Source Catalog [1FGL J0658.5+0641; 19] as an unassociated γ -ray source. The association with NVSS J065844+063711 was established in the *Fermi*-LAT Third Source Catalog [3FGL; 17]. During the first four years of LAT operations, this source displayed a soft power-law spectrum with a photon index $\Gamma \sim 2.5 \pm 0.1$, according to the 3FGL. In the 4FGL, built integrating the first eight years of LAT data, the source displayed a somewhat harder photon index of $\Gamma \sim 2.2 \pm 0.1$ and had a variability index of 10, consistent with no significant variability detected in γ -ray on year timescales [see 4FGL; 14].

The light curves in Figure 2 show overall minor variability. The arrival time of IceCube-201114A (highlighted by the green dotted line) coincides with a quiescent state of NVSS J065844+063711, where no remarkable enhanced activity was detected at γ -ray, X-ray or optical wavelengths. The spectral energy distribution (SED) is shown in Figure 3. It is consistent with an HSP blazar with the low-energy bump peaking at $\nu = 3 \times 10^{15}$ Hz (~ 4 eV) [20]. NVSS J065844+063711 is also included in the *Fermi*-LAT Third Hard Source Catalog, being associated with 3FHL J0658.5+0636 [21]. The highest energy photon reported in the 3FHL consistent with this object is a ~ 61 GeV event. In January 2018, i.e., nearly two years prior to the arrival of IceCube-201114A, a VHE photon with a 155 GeV energy was detected with a probability of $\sim 95\%$ of being associated with

⁷<https://web.oapd.inaf.it/zbllac/refindex.html>

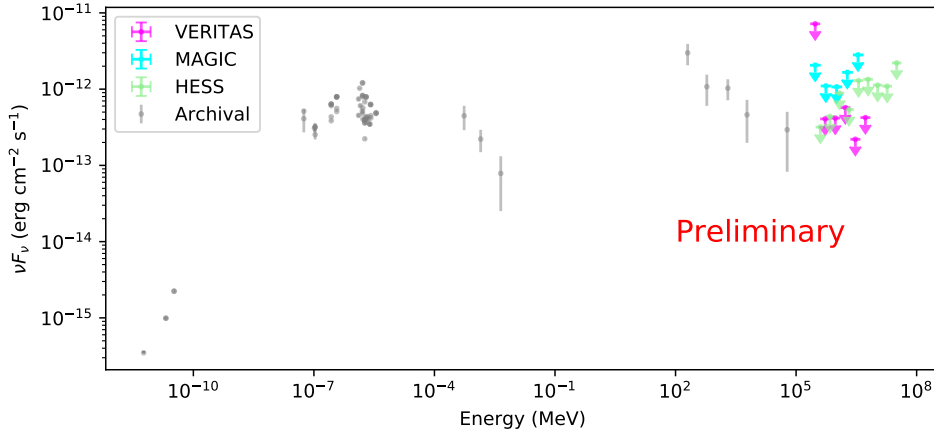


Figure 3: The spectral energy distribution of NVSS J065844+063711. Archival observations collected from the ASDC SED Builder are shown in gray and illustrate the historical flux level of this blazar. The colored data points indicate quasi-simultaneous observations collected with VHE telescopes. For more details on the data collection and analysis, we refer the reader to [22].

this blazar [13]. This VHE photon was accompanied by three other high-energy (i.e., > 10 GeV) photons within a ~ 1 -year period. However, observations by the H.E.S.S., MAGIC and VERITAS telescopes did not lead to the detection of significant VHE emission from NVSS J065844+063711.

Previously, the only VHE γ -ray blazar found within the 90% confidence region of a well-reconstructed IceCube high-energy neutrino event is TXS 0506+056. NVSS J065844+063711, the second only candidate VHE emitter potentially associated with an astrophysical neutrino, may provide crucial information about the hadronic processes at work in the jets of active galactic nuclei and clues on the origin of cosmic neutrinos. To check if this neutrino-blazar association is by chance, a complete statistical analysis will be undertaken in [22].

5. Acknowledgements

SB acknowledges financial support by the European Research Council for the ERC Starting grant MessMapp, under contract no. 949555. The *Fermi*-LAT Collaboration acknowledges support for LAT development, operation and data analysis from NASA and DOE (United States), CEA/Irfu and IN2P3/CNRS (France), ASI and INFN (Italy), MEXT, KEK, and JAXA (Japan), and the K.A. Wallenberg Foundation, the Swedish Research Council and the National Space Board (Sweden). Science analysis support in the operations phase from INAF (Italy) and CNES (France) is also gratefully acknowledged. This work performed in part under DOE Contract DE-AC02-76SF00515. This research is partly based on observations with the 100-m telescope of the MPIfR (Max-Planck-Institut für Radioastronomie) at Effelsberg.

The following persons contributed to the H.E.S.S. analyses: H. Ashkar (IRFU), Y. Becherini (LNU), M. Cerruti (APC), C. Hoischen (Uni. Potsdam), R. Konno (Desy), G. Kukec Mezek (LNU), F. Schüssler (IRFU), M. Senniappan (LNU). The members of the H.E.S.S. Collaboration gratefully acknowledge financial support from the agencies and organizations listed [here](#). FS acknowledges support for this work by the Programme National des Hautes Energies of CNRS/INSU with INP and IN2P3, co-funded by CEA and CNES. The following persons contributed to the MAGIC analyses and campaign organization: Alessio

Berti (MPP), Jorge Otero Santos (IAC), Konstancja Satalecka (DESY) and Elisa Bernardini (Uni. Padua). The members of the MAGIC Collaboration gratefully acknowledge financial support from the agencies and organizations listed [here](#). The members of the VERITAS Collaboration gratefully acknowledge financial support from the agencies and organizations listed [here](#). The ZTF collaboration acknowledges support from institutes and agencies listed [here](#).

References

- [1] Aartsen, M. G. et al. *First observation of PeV-energy neutrinos with IceCube*. PRL, 111, 2, 2013.
- [2] Aartsen, M. G. et al. *Evidence for high-energy extraterrestrial neutrinos at the IceCube detector*. Science, 342, 6161, 2013.
- [3] Mészáros, P. *Astrophysical sources of high-energy neutrinos in the IceCube era*. Annual Review of Nuclear and Particle Science, 67, 45, 2017.
- [4] IceCube Collaboration. *Multimessenger observations of a flaring blazar coincident with high-energy neutrino IceCube-170922A*. Science, 361, 6398, 2018.
- [5] Aartsen, M. et al. *Neutrino emission from the direction of the blazar TXS 0506+ 056 prior to the IceCube-170922A alert*. Science, 361, 6398, 2018.
- [6] Padovani, P. et al. *Dissecting the region around IceCube-170922A: the blazar TXS 0506+ 056 as the first cosmic neutrino source*. MNRAS, 480, 1, 2018.
- [7] Garrappa, S. et al. *Investigation of two Fermi-LAT gamma-ray blazars coincident with high-energy neutrinos detected by IceCube*. ApJ, 880, 2, 2019.
- [8] Mücke, A. and Protheroe, R.J. *A proton synchrotron blazar model for flaring in Markarian 501*. Astroparticle Physics, 15, 1, 2001.
- [9] Mücke, A. et al. *BL Lac objects in the synchrotron proton blazar mode*. Astroparticle Physics, 18, 6, 2003.
- [10] Keivani, A. et al. *A multimessenger picture of the flaring blazar TXS 0506+ 056: Implications for high-energy neutrino emission and cosmic-ray acceleration*. ApJ, 864, 1, 2018.
- [11] Cerruti, M. et al. *Leptohadronic single-zone models for the electromagnetic and neutrino emission of TXS 0506+ 056*. MNRAS Letters, 483, 1, 2019.
- [12] Garrappa, S. & Buson, S. *Fermi-LAT Gamma-ray Observations of IceCube-201114A*. The Astronomer's Telegram, 14188, 1, 2020.
- [13] Buson, S., Garrappa, S. and Cheung, C.C. *Fermi-LAT evidence for VHE emission from NVSS J065844+063711*. The Astronomer's Telegram, 14200, 1, 2020.
- [14] Abdollahi, S. et al. *Fermi large area telescope fourth source catalog*. ApJS, 247, 1, 2020.

- [15] D’Abrusco, R. et al. *Two new catalogs of blazar candidates in the WISE infrared sky*. ApJS, 242, 1, 2019.
- [16] Massaro, E. et al. *The 5th edition of the Roma-BZCAT. A short presentation*. Ap&SS, 357, 1, 2015.
- [17] Acero, F. et al. *Fermi large area telescope third source catalog*. ApJS, 218, 2, 2015.
- [18] Landoni, M. et al. *ZBLLAC: A Spectroscopic Database of BL Lacertae Objects*. ApJS, 250, 2, 2020.
- [19] Abdo, A. et al. *Fermi Large Area Telescope First Source Catalog*. ApJS, 188, 2, 2010.
- [20] Chang, Y.-L., et al. *The 3HSP catalogue of extreme and high-synchrotron-peaked blazars*. A&A, 632, A77, 2019.
- [21] Ajello, M., et al. *3FHL: The Third Catalog of Hard Fermi-LAT Sources*. ApJS, 232, 2, 2017.
- [22] de Menezes, R., et al. in prep.
- [23] De Naurois, M. and Rolland, L., *A high performance likelihood reconstruction of γ -rays for imaging atmospheric Cherenkov telescopes*, APP, 5, 32, 2009.
- [24] Parsons, RD and Hinton, J., *A Monte Carlo template based analysis for air-Cherenkov arrays*, APP, 56, 2014.
- [25] Berge, D. and Funk, S. and Hinton, J., *Background modelling in very-high-energy gamma-ray astronomy*, AAP, 466, 2007.
- [26] R. Zanin et al. Proceedings, 33rd International Cosmic Ray Conference (ICRC2013), p2937 July 2013.
- [27] Maier, G. and Holder, J., *Eventdisplay: An Analysis and Reconstruction Package for Ground-based Gamma-ray Astronomy*, 35th International Cosmic Ray Conference (ICRC2017), p. 747. Jan., 2017.
- [28] Cogan., P. *VEGAS, the VERITAS Gamma-ray Analysis Suite*, 30th International Cosmic Ray Conference (ICRC2007), pp. 1385–1388. Jan., 2008.
- [29] Satalecka, K. *Searching for VHE gamma-ray emission associated with IceCube neutrino alerts using FACT, H.E.S.S., MAGIC, and VERITAS*, 37th International Cosmic Ray Conference (ICRC2021)
- [30] Coleiro, A. and Dornic, D. *IceCube-201114A: No neutrino counterpart candidates in ANTARES search*, GCN 28890, 2020.
- [31] Rolke, Wolfgang A., Angel M. Lopez, and Jan Conrad. *Limits and confidence intervals in the presence of nuisance parameters.*, Nuclear Instruments and Methods in Physics Research Section A: Accelerators, Spectrometers, Detectors and Associated Equipment 551.2-3 (2005): 493-503.

Full Authors List: Fermi-LAT, H.E.S.S., MAGIC, VERITAS, ZTF, and TELAMON Collaborations

Raniere de Menezes^a, Sara Buson^b, Simone Garrappa^e, Andrea Gokus^{b,n}, Matthias Kadler^b, Teddy Cheung^f, Marcello Giroletti^u, Marco Ajello^x, Francesco Massaroⁱ, Harold Peña-Herazo^y, Fabian Schüssler^c, Elisa Bernardini^d, Konstancja Satalecka^e, Alessandro Paggi^{i,j,k}, Andrea Tramacere^l, Charlotte Ward^m, Suvi Gezari^z, Frank J. Masci^f, Richard Walters^g, Steven Hämmerichⁿ, Joern Wilmsⁿ, Werner Colmar^p, Uwe Bach^o, Florian Eppel^b, Jonas Heßdörfer^b, Alex Kraus^o, Georgios Filippou Paraschos^o, Javier Moldón^q, Miguel Pérez-Torres^q, Iván Agudo^q, Giacomo Bonnoli^q, Alberto J. Castro-Tirado^q, Youdong Hu^q, Maria D. Caballero-Garcia^q, Emilio Fernandez-Garcia^q, Ruben Sanchez-Ramirez^r, Alexis Coleiro^s, Antoine Kouchner^s, Cristina Nanci^{u,v}, Yong Sheng^x, and Meenakshi Rajagopal^x

^aUniversidade de São Paulo, Departamento de Astronomia, Rua do Matão, 1226, São Paulo, SP 05508-090, Brazil.

^bInstitut für Theoretische Physik and Astrophysik, Universität Würzburg, D-97074 Würzburg, Germany.

^cIRFU, CEA, Université Paris-Saclay, F-91191 Gif-sur-Yvette, France.

^dUniversity of Padova, Physics & Astronomy Dep. "G. Galilei", F. Marzolo, 8, 35121, Padova, Italy.

^eDESY, Platannenallee 6, 15387 Zeuthen, Germany.

^fIPAC, California Institute of Technology, 1200 E. California Blvd, Pasadena, CA 91125, USA

^gDivision of Physics, Mathematics, and Astronomy, California Institute of Technology, Pasadena, CA 91125, USA

ⁱDipartimento di Fisica, Università degli Studi di Torino, via Pietro Giuria 1, I-10125 Torino, Italy.

^jINAF-Osservatorio Astrofisico di Torino, via Osservatorio 20, I-10025 Pino Torinese, Italy.

^kIstituto Nazionale di Fisica Nucleare, Sezione di Torino, via Pietro Giuria 1, I-10125 Torino, Italy.

^lDepartment of Astronomy, University of Geneva, Ch. d'Écogia 16, 1290, Versoix, Switzerland.

^mDepartment of Astronomy, University of Maryland, College Park, MD 20742, USA.

ⁿDr. Karl Remis-Observatory and Erlangen Centre for Astroparticle Physics, Universität Erlangen-Nürnberg, Sternwartstr. 7, 96049 Bamberg, Germany.

^oMax-Planck-Institut für Radioastronomie, Auf dem Hügel 69, 53121, Bonn, Germany.

^pMax-Planck-Institut für extraterrestrische Physik, Garching, Germany.

^qInstituto de Astrofísica de Andalucía (CSIC), Glorieta de la Astronomía, s/n, E-18008 Granada, Spain.

^rINAF, Istituto di Astrofisica e Planetologia Spaziali, via Fosso del Cavaliere 100, I-00133 Rome, Italy.

^sUniversité de Paris, CNRS, Astroparticule et Cosmologie, F-75013 Paris, France.

^tNaval Research Laboratory, Space Science Division, Washington, DC 20375, USA.

^uINAF Istituto di Radioastronomia, via Gobetti 101, I-40129 Bologna, Italy.

^vDepartment of Physics and Astronomy, University of Bologna, Via Gobetti 93/2 – 40129 Bologna, Italy.

^xDepartment of Physics and Astronomy, Clemson University, Kinard Lab of Physics, Clemson, SC 29634-0978, USA.

^yInstituto Nacional de Astrofísica, Óptica y Electrónica, Apartado Postal 51-216, 72000 Puebla, México.

^zSpace Telescope Science Institute, 3700 San Martin Dr., Baltimore, MD 21218, USA.

Full Authors List: VERITAS Collaboration

C. B. Adams¹, A. Archer², W. Benbow³, A. Brill¹, J. H. Buckley⁴, M. Capasso⁵, J. L. Christiansen⁶, A. J. Chromey⁷, M. Errando⁴, A. Falcone⁸, K. A. Farrell⁹, Q. Feng⁵, G. M. Foote¹⁰, L. Fortson¹¹, A. Furniss¹², A. Gent¹³, G. H. Gillanders¹⁴, C. Giuri¹⁵, O. Gueta¹⁵, D. Hanna¹⁶, O. Hervet¹⁷, J. Holder¹⁰, B. Hona¹⁸, T. B. Humensky¹, W. Jin¹⁹, P. Kaaret²⁰, M. Kertzman², T. K. Kleiner¹⁵, S. Kumar¹⁶, M. J. Lang¹⁴, M. Lundy¹⁶, G. Maier¹⁵, C. E. McGrath⁹, P. Moriarty¹⁴, R. Mukherjee⁵, D. Nieto²¹, M. Nieves-Rosillo¹⁵, S. O'Brien¹⁶, R. A. Ong²², A. N. Otte¹³, S. R. Patel¹⁵, S. Patel²⁰, K. Pfrang¹⁵, M. Pohl^{23,15}, R. R. Prado¹⁵, E. Pueschel¹⁵, J. Quinn⁹, K. Ragan¹⁶, P. T. Reynolds²⁴, D. Ribeiro³, E. Roache³, J. L. Ryan²², I. Sadeh¹⁵, M. Santander¹⁹, G. H. Sembroski²⁵, R. Shang²², D. Tak¹⁵, V. V. Vassiliev²², A. Weinstein⁷, D. A. Williams¹⁷, and T. J. Williamson¹⁰

¹Physics Department, Columbia University, New York, NY 10027, USA ²Department of Physics and Astronomy, DePauw University, Greencastle, IN 46135-0037, USA ³Center for Astrophysics | Harvard & Smithsonian, Cambridge, MA 02138, USA ⁴Department of Physics, Washington University, St. Louis, MO 63130, USA ⁵Department of Physics and Astronomy, Barnard College, Columbia University, NY 10027, USA ⁶Physics Department, California Polytechnic State University, San Luis Obispo, CA 94307, USA ⁷Department of Physics and Astronomy, Iowa State University, Ames, IA 50011, USA ⁸Department of Astronomy and Astrophysics, 525 Davey Lab, Pennsylvania State University, University Park, PA 16802, USA ⁹School of Physics, University College Dublin, Belfield, Dublin 4, Ireland ¹⁰Department of Physics and Astronomy and the Bartol Research Institute, University of Delaware, Newark, DE 19716, USA ¹¹School of Physics and Astronomy, University of Minnesota, Minneapolis, MN 55455, USA ¹²Department of Physics, California State University - East Bay, Hayward, CA 94542, USA ¹³School of Physics and Center for Relativistic Astrophysics, Georgia Institute of Technology, 837 State Street NW, Atlanta, GA 30332-0430 ¹⁴School of Physics, National University of Ireland Galway, University Road, Galway, Ireland ¹⁵DESY, Platanenallee 6, 15738 Zeuthen, Germany ¹⁶Physics Department, McGill University, Montreal, QC H3A 2T8, Canada ¹⁷Santa Cruz Institute for Particle Physics and Department of Physics, University of California, Santa Cruz, CA 95064, USA ¹⁸Department of Physics and Astronomy, University of Utah, Salt Lake City, UT 84112, USA ¹⁹Department of Physics and Astronomy, University of Alabama, Tuscaloosa, AL 35487, USA ²⁰Department of Physics and Astronomy, University of Iowa, Van Allen Hall, Iowa City, IA 52242, USA ²¹Institute of Particle and Cosmos Physics, Universidad Complutense de Madrid, 28040 Madrid, Spain ²²Department of Physics and Astronomy, University of California, Los Angeles, CA 90095, USA ²³Institute of Physics and Astronomy, University of Potsdam, 14476 Potsdam-Golm, Germany ²⁴Department of Physical Sciences, Munster Technological University, Bishopstown, Cork, T12 P928, Ireland ²⁵Department of Physics and Astronomy, Purdue University, West Lafayette, IN 47907, USA

Full Authors List: MAGIC Collaboration

V. A. Acciari¹, S. Ansoldi^{2,41}, L. A. Antonelli³, A. Arbet Engels⁴, M. Artero⁵, K. Asano⁶, D. Baack⁷, A. Babić⁸, A. Baquero⁹, U. Barres de Almeida¹⁰, J. A. Barrio⁹, I. Batković¹¹, J. Becerra González¹, W. Bednarek¹², L. Bellizzi¹³, E. Bernardini¹⁴, M. Bernardos¹¹, A. Berti¹⁵, J. Besenrieder¹⁵, W. Bhattacharyya¹⁴, C. Bigongiari³, A. Biland⁴, O. Blanch⁵, H. Bökenkamp⁷, G. Bonnoli¹⁶, Ž. Bošnjak⁸, G. Busetto¹¹, R. Carosi¹⁷, G. Ceribella¹⁵, M. Cerruti¹⁸, Y. Chai¹⁵, A. Chilingarian¹⁹, S. Cikota⁸, S. M. Colak⁵, E. Colombo¹, J. L. Contreras⁹, J. Cortina²⁰, S. Covino³, G. D'Amico^{15,42}, V. D'Elia³, P. Da Vela^{17,43}, F. Dazzi³, A. De Angelis¹¹, B. De Lotto², M. Delfino^{5,44}, J. Delgado^{5,44}, C. Delgado Mendez²⁰, D. Depaoli²¹, F. Di Pierro²¹, L. Di Venere²², E. Do Souto Espiñeira⁵, D. Dominis Prester²³, A. Donini², D. Dorner²⁴, M. Doro¹¹, D. Elsaesser⁷, V. Fallah Ramazani^{25,45}, A. Fattorini⁷, M. V. Fonseca⁹, L. Font²⁶, C. Fruck¹⁵, S. Fukami⁶, Y. Fukazawa²⁷, R. J. García López¹, M. Garczarczyk¹⁴, S. Gasparyan²⁸, M. Gaug²⁶, N. Giglietto²², F. Giordano²², P. Gliwny¹², N. Godinović²⁹, J. G. Green³, D. Green¹⁵, D. Hadasch⁶, A. Hahn¹⁵, L. Heckmann¹⁵, J. Herrera¹, J. Hoang^{9,46}, D. Hrupec³⁰, M. Hütten¹⁵, T. Inada⁶, K. Ishio¹², Y. Iwamura⁶, I. Jiménez Martínez²⁰, J. Jormanainen²⁵, L. Jouvin⁵, M. Karjalainen¹, D. Kerszberg⁵, Y. Kobayashi⁶, H. Kubo³¹, J. Kushida³², A. Lamastra³, D. Lelas²⁹, F. Leone³, E. Lindfors²⁵, L. Linhoff⁷, S. Lombardi³, F. Longo^{2,47}, R. López-Coto¹¹, M. López-Moya⁹, A. López-Oramas¹, S. Loporchio²², B. Machado de Oliveira Fraga¹⁰, C. Maggio²⁶, P. Majumdar³³, M. Makariev³⁴, M. Mallamaci¹¹, G. Maneva³⁴, M. Manganaro²³, K. Mannheim²⁴, L. Maraschi³, M. Mariotti¹¹, M. Martínez⁵, D. Mazin^{6,48}, S. Menchiarì¹³, S. Mender⁷, S. Mićanović²³, D. Miceli^{2,49}, T. Miener⁹, J. M. Miranda¹³, R. Mirzoyan¹⁵, E. Molina¹⁸, A. Moralejo⁵, D. Morcuende⁹, V. Moreno²⁶, E. Moretti⁵, T. Nakamori³⁵, L. Nava³, V. Neustroev³⁶, C. Nigro⁵, K. Nilsson²⁵, K. Nishijima³², K. Noda⁶, S. Nozaki³¹, Y. Ohtani⁶, T. Oka³¹, J. Otero-Santos¹, S. Paiano³, M. Palatiello², D. Paneque¹⁵, R. Paoletti¹³, J. M. Paredes¹⁸, L. Pavletic²³, P. Peñil⁹, M. Persic^{2,50}, M. Pihet¹⁵, P. G. Prada Moroni¹⁷, E. Prandini¹¹, C. Priyadarshi⁵, I. Puljak²⁹, W. Rhode⁷, M. Ribó¹⁸, J. Rico⁵, C. Righi³, A. Rugliancich¹⁷, N. Sahakyan²⁸, T. Saito⁶, S. Sakurai⁶, K. Satalecka¹⁴, F. G. Saturni³, B. Schleicher²⁴, K. Schmidt⁷, T. Schweizer¹⁵, J. Sitarek¹², I. Šnidarić³⁷, D. Sobczynska¹², A. Spolon¹¹, A. Stamerra³, J. Strišković³⁰, D. Strom¹⁵, M. Strzys⁶, Y. Suda²⁷, T. Suric³⁷, M. Takahashi⁶, R. Takeishi⁶, F. Tavecchio³, P. Temnikov³⁴, T. Terzić²³, M. Teshima^{15,51}, L. Tosti³⁸, S. Truzzi¹³, A. Tutone³, S. Ubach²⁶, J. van Scherpenberg¹⁵, G. Vanzo¹, M. Vazquez Acosta¹, S. Ventura¹³, V. Verguillov³⁴, C. F. Vigorito²¹, V. Vitale³⁹, I. Vovk⁶, M. Will¹⁵, C. Wunderlich¹³, T. Yamamoto⁴⁰, and D. Zarić²⁹

¹ Instituto de Astrofísica de Canarias and Dpto. de Astrofísica, Universidad de La Laguna, E-38200, La Laguna, Tenerife, Spain ² Università di Udine and INFN Trieste, I-33100 Udine, Italy ³ National Institute for Astrophysics (INAF), I-00136 Rome, Italy ⁴ ETH Zürich, CH-8093 Zürich, Switzerland ⁵ Institut de Física d'Altes Energies (IFAE), The Barcelona Institute of Science and Technology (BIST), E-08193 Bellaterra (Barcelona), Spain ⁶ Japanese MAGIC Group: Institute for Cosmic Ray Research (ICRR), The University of Tokyo, Kashiwa, 277-8582 Chiba, Japan ⁷ Technische Universität Dortmund, D-44221 Dortmund, Germany ⁸ Croatian MAGIC

Group: University of Zagreb, Faculty of Electrical Engineering and Computing (FER), 10000 Zagreb, Croatia ⁹ IPARCOS Institute and EMFTEL Department, Universidad Complutense de Madrid, E-28040 Madrid, Spain ¹⁰ Centro Brasileiro de Pesquisas Físicas (CBPF), 22290-180 URCA, Rio de Janeiro (RJ), Brazil ¹¹ Università di Padova and INFN, I-35131 Padova, Italy ¹² University of Lodz, Faculty of Physics and Applied Informatics, Department of Astrophysics, 90-236 Lodz, Poland ¹³ Università di Siena and INFN Pisa, I-53100 Siena, Italy ¹⁴ Deutsches Elektronen-Synchrotron (DESY), D-15738 Zeuthen, Germany ¹⁵ Max-Planck-Institut für Physik, D-80805 München, Germany ¹⁶ Instituto de Astrofísica de Andalucía-CSIC, Glorieta de la Astronomía s/n, 18008, Granada, Spain ¹⁷ Università di Pisa and INFN Pisa, I-56126 Pisa, Italy ¹⁸ Universitat de Barcelona, ICCUB, IEEC-UB, E-08028 Barcelona, Spain ¹⁹ Armenian MAGIC Group: A. Alikhanyan National Science Laboratory, 0036 Yerevan, Armenia ²⁰ Centro de Investigaciones Energéticas, Medioambientales y Tecnológicas, E-28040 Madrid, Spain ²¹ INFN MAGIC Group: INFN Sezione di Torino and Università degli Studi di Torino, I-10125 Torino, Italy ²² INFN MAGIC Group: INFN Sezione di Bari and Dipartimento Interateneo di Fisica dell'Università e del Politecnico di Bari, I-70125 Bari, Italy ²³ Croatian MAGIC Group: University of Rijeka, Department of Physics, 51000 Rijeka, Croatia ²⁴ Universität Würzburg, D-97074 Würzburg, Germany ²⁵ Finnish MAGIC Group: Finnish Centre for Astronomy with ESO, University of Turku, FI-20014 Turku, Finland ²⁶ Departament de Física, and CERES-IEEC, Universitat Autònoma de Barcelona, E-08193 Bellaterra, Spain ²⁷ Japanese MAGIC Group: Physics Program, Graduate School of Advanced Science and Engineering, Hiroshima University, 739-8526 Hiroshima, Japan ²⁸ Armenian MAGIC Group: ICRA Net-Armenia at NAS RA, 0019 Yerevan, Armenia ²⁹ Croatian MAGIC Group: University of Split, Faculty of Electrical Engineering, Mechanical Engineering and Naval Architecture (FESB), 21000 Split, Croatia ³⁰ Croatian MAGIC Group: Josip Juraj Strossmayer University of Osijek, Department of Physics, 31000 Osijek, Croatia ³¹ Japanese MAGIC Group: Department of Physics, Kyoto University, 606-8502 Kyoto, Japan ³² Japanese MAGIC Group: Department of Physics, Tokai University, Hiratsuka, 259-1292 Kanagawa, Japan ³³ Saha Institute of Nuclear Physics, HBNI, 1/AF Bidhannagar, Salt Lake, Sector-1, Kolkata 700064, India ³⁴ Inst. for Nucl. Research and Nucl. Energy, Bulgarian Academy of Sciences, BG-1784 Sofia, Bulgaria ³⁵ Japanese MAGIC Group: Department of Physics, Yamagata University, Yamagata 990-8560, Japan ³⁶ Finnish MAGIC Group: Astronomy Research Unit, University of Oulu, FI-90014 Oulu, Finland ³⁷ Croatian MAGIC Group: Ruđer Bošković Institute, 10000 Zagreb, Croatia ³⁸ INFN MAGIC Group: INFN Sezione di Perugia, I-06123 Perugia, Italy ³⁹ INFN MAGIC Group: INFN Roma Tor Vergata, I-00133 Roma, Italy ⁴⁰ Japanese MAGIC Group: Department of Physics, Konan University, Kobe, Hyogo 658-8501, Japan ⁴¹ also at International Center for Relativistic Astrophysics (ICRA), Rome, Italy ⁴² now at Department for Physics and Technology, University of Bergen, NO-5020, Norway ⁴³ now at University of Innsbruck ⁴⁴ also at Port d'Informació Científica (PIC), E-08193 Bellaterra (Barcelona), Spain ⁴⁵ now at Ruhr-Universität Bochum, Fakultät für Physik und Astronomie, Astronomisches Institut (AIRUB), 44801 Bochum, Germany ⁴⁶ now at Department of Astronomy, University of California Berkeley, Berkeley CA 94720 ⁴⁷ also at Dipartimento di Fisica, Università di Trieste, I-34127 Trieste, Italy ⁴⁸ Max-Planck-Institut für Physik, D-80805 München, Germany ⁴⁹ now at Laboratoire d'Annecy de Physique des Particules (LAPP), CNRS-IN2P3, 74941 Annecy Cedex, France ⁵⁰ also at INAF Trieste and Dept. of Physics and Astronomy, University of Bologna, Bologna, Italy ⁵¹ Japanese MAGIC Group: Institute for Cosmic Ray Research (ICRR), The University of Tokyo, Kashiwa, 277-8582 Chiba, Japan